

Anti-Bcl-2-modifying factor Bmf Antibody

Catalog Number: A02432-1

About BMF

Apoptosis is related to many diseases and development. Members in the Bcl-2 family are critical regulators of apoptosis by either inhibiting or promoting cell death. Bcl-2 homology 3 (BH3) domain is a potent death domain. BH3-only proteins, including Bad, Bid, Bik, Hrk, Bim, Noxa, and PUMA, form a growing subclass of the Bcl-2 family. A novel BH3-only protein was recently identified in human and mouse and designated Bmf (for Bcl-2-modifying factor). The BH3 domain in Bmf is required both for binding to Bcl-2 proteins and for triggering apoptosis. In healthy cells, Bmf associates with the dynein light chain 2 (DLC2) component of the myosin V motors and is sequestered by the cell's actin cytoskeleton. Disruption of the actin cytoskeleton, either by depolymerization of actin filaments or by detachment of cells from the extracellular matrix, triggers release and activation of Bmf, initiating the downstream apoptotic program. Bmf is constitutively expressed in many tissues.

Overview

Product Name	Anti-Bcl-2-modifying factor Bmf Antibody
Reactive Species	Human, Mouse
Description	Boster Bio Anti-Bcl-2-modifying factor Bmf Antibody (Catalog # A02432-1). Tested in ELISA, WB, ICC applications. This antibody reacts with Human, Mouse.
Application	ELISA, ICC, WB
Clonality	Polyclonal
Formulation	Bmf Antibody is supplied in PBS containing 0.02% sodium azide.
Storage Instructions	Bmf antibody can be stored at 4°C for three months and -20°C, stable for up to one year. Avoid repeated freeze-thaw cycles. Antibodies should not be exposed to prolonged high temperatures.
Host	Rabbit
Uniprot ID	Q96LC9

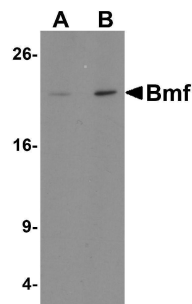
Technical Details

Immunogen	Bmf antibody was raised with a synthetic peptide corresponding to 15 amino acids near the amino terminus of human Bmf. The immunogen is located within the first 50 amino acids of Bmf.
Predicted Reactive Species	Rat
Isotype	IgG
Form	Liquid
Concentration	1 mg/mL
Purification	Bmf Antibody is affinity chromatography purified via peptide column.

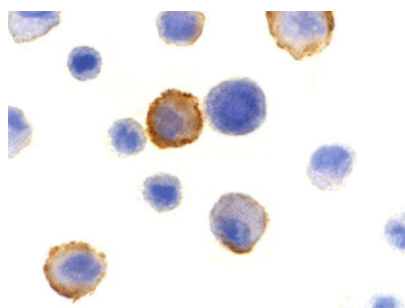
Suggested Dilutions

Bmf antibody can be used for detection of Bmf by Western blot at 1 - 2 ug/mL. Antibody can also be used for immunocytochemistry starting at 10 ug/mL. For immunofluorescence start at 5 ug/mL. Antibody validated: Western Blot in human samples; Immunocytochemistry in human samples and Immunofluorescence in human samples. All other applications and species not yet tested. Optimal dilutions for each application should be determined by the researcher.

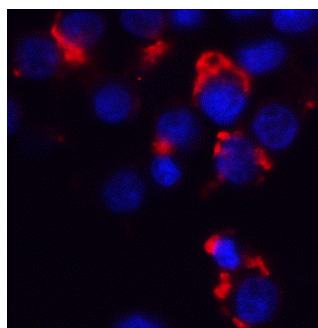
Anti-Bcl-2-modifying factor Bmf Antibody (A02432-1) Images



Western blot analysis of Bmf in 293 cell lysate with Bmf antibody at (A) 1 and (B) 2 ug/ml.



Immunocytochemistry of Bmf in HeLa cells with Bmf antibody at 10 ug/mL.



Immunofluorescence of Bmf in HeLa cells with Bmf antibody at 5 ug/mL. Red: Bmf Antibody (A02432-1) Blue: DAPI staining

Submit a product review to [Biocompare.com](https://www.biocompare.com)

Submit a review of this product to [Biocompare.com](https://www.biocompare.com) to receive a \$20 Amazon.com giftcard! Your reviews help your fellow scientists make the right decisions. Thank you for your contribution.



Anti-Bcl-2-modifying factor Bmf Antibody

For Research Use Only. Not for use in diagnostic procedures.