

## Anti-Bit1 PTRH2 Antibody

Catalog Number: A02459-1

### About PTRH2

Adhesion to extracellular matrix regulates cell survival through both integrin engagement and appropriate cell spreading. Anoikis is the molecular mechanism of apoptosis induced by integrin detachment. Bit1 (Bcl-2 inhibitor of transcription 1) was recently identified as being involved in this process. Bit1 is a mitochondrial protein that is released into the cytoplasm upon onset of apoptosis where it forms a complex with AES, a small Groucho/transducin-like enhancer of split (TLE) protein and induces caspase-independent apoptosis. Both AES and TLE proteins are transcriptional co-repressors that play important roles in neurogenesis, segmentation, and sex determination. It has been suggested that Bit1-AES complexes turn off a survival-promoting gene transcription program controlled by TLE. Interestingly, apoptosis of cells transfected with Bit1 and AES could be inhibited if the cells were allowed to attach to fibronectin through the alpha5beta1 integrin suggesting that the Bit1-AES pathway contributing to anoikis is regulated by integrins, and in particular, the alpha5beta1 integrin.

### Overview

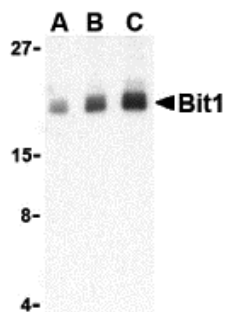
Product Name	Anti-Bit1 PTRH2 Antibody
Reactive Species	Human, Mouse
Description	Boster Bio Anti-Bit1 PTRH2 Antibody (Catalog # A02459-1). Tested in ELISA, WB, IHC-P, IF applications. This antibody reacts with Human, Mouse.
Application	ELISA, IF, IHC-P, WB
Clonality	Polyclonal
Formulation	Bit1 Antibody is supplied in PBS containing 0.02% sodium azide.
Storage Instructions	Bit1 antibody can be stored at 4°C for three months and -20°C, stable for up to one year. Avoid repeated freeze-thaw cycles. Antibodies should not be exposed to prolonged high temperatures.
Host	Rabbit
Uniprot ID	Q9Y3E5

### Technical Details

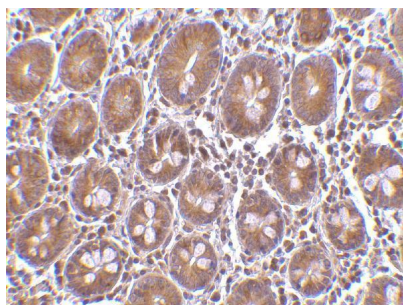
Immunogen	Bit1 antibody was raised against a 16 amino acid synthetic peptide from near the center of human Bit1. The immunogen is located within amino acids 80 - 130 of Bit1.
Predicted Reactive Species	Bovine
Isotype	IgG
Form	Liquid
Concentration	1 mg/mL

Purification	Bit1 Antibody is affinity chromatography purified via peptide column.
Suggested Dilutions	Bit1 antibody can be used for the detection of Bit1 by Western blot at 1 - 4 ug/mL. Antibody can also be used for immunohistochemistry starting at 10 ug/mL. For immunofluorescence start at 20 ug/mL. Antibody validated: Western Blot in human samples; Immunohistochemistry in human samples and Immunofluorescence in human samples. All other applications and species not yet tested. Optimal dilutions for each application should be determined by the researcher.

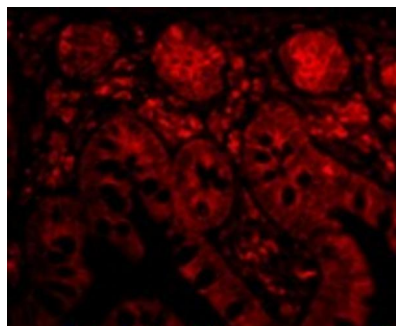
## Anti-Bit1 PTRH2 Antibody (A02459-1) Images



Western blot analysis of Bit1 in Daudi cell lysate with Bit1 antibody at (A) 1, (B) 2, and (C) 4 ug/mL.



Immunohistochemistry of Bit1 in human small intestine tissue with Bit1 antibody at 10 ug/mL.



Immunofluorescence of Bit1 in Human Small Intestine cells with Bit1 antibody at 20 ug/mL.

### Submit a product review to [Biocompare.com](https://www.biocompare.com)

Submit a review of this product to [Biocompare.com](https://www.biocompare.com) to receive a \$20 Amazon.com giftcard! Your reviews help your fellow scientists make the right decisions. Thank you for your contribution.



Anti-Bit1 PTRH2 Antibody

For Research Use Only. Not for use in diagnostic procedures.