

## Anti-GSTO1 Antibody

Catalog Number: A02461-1

### About GSTO1

This gene encodes a member of the omega class of glutathione S-transferase (GST) proteins. GSTs are involved in the metabolism of xenobiotics and carcinogens. There is evidence that the encoded protein is involved in the biotransformation of arsenic.

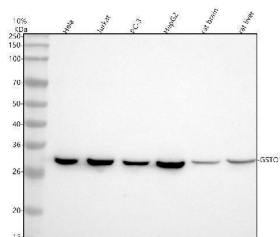
### Overview

Product Name	Anti-GSTO1 Antibody
Reactive Species	Human, Mouse, Rat
Description	Boster Bio Anti-GSTO1 Antibody catalog # A02461-1. Tested in WB, IHC, ICC/IF, ELISA applications. This antibody reacts with Human, Mouse, Rat.
Application	ELISA, IF, IHC, ICC, WB
Clonality	Polyclonal
Formulation	500 ug/ml antibody with PBS, 0.02% NaN <sub>3</sub> , 1 mg stabilizing protein and 50% glycerol *This antibody is supplied in a stabilized formulation. Compatibility with conjugation reactions depends on the chemistry of the conjugation method used. For conjugation methods that are not compatible with the stabilizing components present in this formulation, a carrier-free antibody format is required.
Storage Instructions	12 months from date of receipt, -20°C as supplied. 6 months 2 to 8°C after reconstitution. Avoid repeated freezing and thawing.
Host	Rabbit
Uniprot ID	P78417

### Technical Details

Immunogen	E.coli-derived human GSTO1 recombinant protein (Position: G3-L241).
Form	Liquid
Purification	Immunogen affinity purified.
Suggested Dilutions	Western blot (WB): 1:500-2000 Immunohistochemistry (IHC): 1:50-400 Immunocytochemistry/Immunofluorescence (ICC/IF): 1:50-400 Enzyme linked immunosorbent assay (ELISA): 1:100-1000

## Anti-GSTO1 Antibody (A02461-1) Images



Western blot analysis of GSTO1 using anti-GSTO1 antibody (A02461-1). Electrophoresis was performed on a 10% SDS-PAGE gel at 80V (Stacking gel) / 120V (Resolving gel) for 2 hours. The sample well of each lane was loaded with 30 ug of sample under reducing conditions. Lane 1: human Hela whole cell lysates, Lane 2: human Jurkat whole cell lysates, Lane 3: human PC-3 whole cell lysates, Lane 4: human HepG2 whole cell lysates, Lane 5: rat brain tissue lysates, Lane 6: rat liver tissue lysates. After electrophoresis, proteins were transferred to a nitrocellulose membrane at 150 mA for 50-90 minutes. Blocked the membrane with 5% non-fat milk/TBS for 1.5 hour at RT. The membrane was incubated with rabbit anti-GSTO1 antigen affinity purified polyclonal antibody (A02461-1) at 1:1000 overnight at 4°C, then washed with TBS-0.1%Tween 3 times with 5 minutes each and probed with a goat anti-rabbit IgG-HRP secondary antibody at a dilution of 1:5000 for 1.5 hour at RT. The signal is developed using an ECL Plus Western Blotting Substrate (Catalog # AR1196-200) with Tanon 5200 system. A specific band was detected for GSTO1 at approximately 28 kDa. The expected band size for GSTO1 is at 28 kDa.

### Submit a product review to Biocompare.com

Submit a review of this product to Biocompare.com to receive a \$20 Amazon.com giftcard! Your reviews help your fellow scientists make the right decisions. Thank you for your contribution.



Anti-GSTO1 Antibody

For Research Use Only. Not for use in diagnostic procedures.