

## Anti-Cellubrevin VAMP3 Antibody

Catalog Number: A02464-1

### Overview

|                      |                                                                                                                                                                |
|----------------------|----------------------------------------------------------------------------------------------------------------------------------------------------------------|
| Product Name         | Anti-Cellubrevin VAMP3 Antibody                                                                                                                                |
| Reactive Species     | Human, Mouse, Rat                                                                                                                                              |
| Description          | Boster Bio Anti-Cellubrevin VAMP3 Antibody catalog # A02464-1. Tested in WB,ICC,IF,IHC,Flow Cytometry applications. This antibody reacts with Human,Mouse,Rat. |
| Application          | Flow Cytometry, IF, IHC, ICC, WB                                                                                                                               |
| Clonality            | Polyclonal                                                                                                                                                     |
| Formulation          | Rabbit IgG, 1mg/ml in PBS with 0.02% sodium azide, 50% glycerol, pH7.2                                                                                         |
| Storage Instructions | Store at -20°C for one year. For short term storage and frequent use, store at 4°C for up to one month. Avoid repeated freeze-thaw cycles.                     |
| Host                 | Rabbit                                                                                                                                                         |
| Uniprot ID           | Q15836                                                                                                                                                         |

### Technical Details

|                     |                                                                           |
|---------------------|---------------------------------------------------------------------------|
| Immunogen           | Synthetic peptide conjugated to KLH within N-terminal human Cellubrevin.  |
| Isotype             | IgG                                                                       |
| Form                | Liquid                                                                    |
| Concentration       | 1 mg/ml                                                                   |
| Purification        | ProA affinity purified                                                    |
| Suggested Dilutions | WB: 1:500-1:2,000<br>ICC: 1:50-1:200<br>IHC: 1:50-1:200<br>FC: 1:50-1:100 |

## Anti-Cellubrevin VAMP3 Antibody (A02464-1) Images

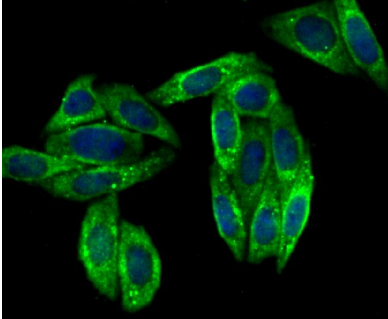


Figure 2. Immunocytochemistry staining of VAMP3 using Anti-Cellubrevin VAMP3 Antibody (A02464-1).

ICC staining Cellubrevin in SiHa cells (green). The nuclear counter stain is DAPI (blue). Cells were fixed in paraformaldehyde

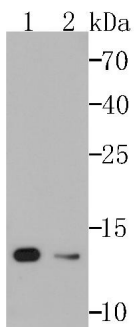


Figure 1. Western blotting validation for Anti-Cellubrevin VAMP3 Antibody A02464-1

Western blot analysis of Cellubrevin on A549 (1)

### Submit a product review to [Biocompare.com](https://www.biocompare.com)

Submit a review of this product to [Biocompare.com](https://www.biocompare.com) to receive a \$20 Amazon.com giftcard! Your reviews help your fellow scientists make the right decisions. Thank you for your contribution.



Anti-Cellubrevin VAMP3 Antibody