

## Anti-LPIN1 Antibody

Catalog Number: A02467

### About LPIN1

LPIN1, also known as PAP1, is a magnesium-ion-dependent phosphatidic acid phosphohydrolase enzyme that catalyzes the penultimate step in triglyceride synthesis including the dephosphorylation of phosphatidic acid to yield diacylglycerol (reviewed in 1). LPIN1 is required for adipocyte differentiation and it also functions as a nuclear transcriptional coactivator with some peroxisome proliferator-activated receptors to modulate expression of other genes involved in lipid metabolism (1,2). Mutations in LPIN1 are associated with metabolic diseases such as type 2 diabetes and recurrent acute myoglobinuria (3,4) and it is also a candidate for several human lipodystrophy syndromes (5).

### Overview

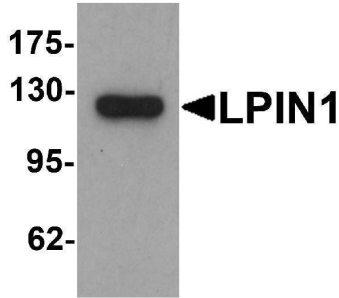
Product Name	Anti-LPIN1 Antibody
Reactive Species	Human, Mouse, Rat
Description	Boster Bio Anti-LPIN1 Antibody (Catalog # A02467). Tested in ELISA, WB, IHC-P, IF applications. This antibody reacts with Human, Mouse, Rat.
Application	ELISA, IF, IHC-P, WB
Clonality	Polyclonal
Formulation	LPIN Antibody is supplied in PBS containing 0.02% sodium azide.
Storage Instructions	LPIN antibody can be stored at 4°C for three months and -20°C, stable for up to one year.
Host	Rabbit
Uniprot ID	Q14693

### Technical Details

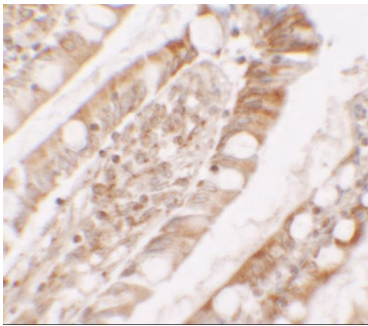
Immunogen	LPIN1 antibody was raised against an 18 amino acid peptide near the carboxy terminus of human LPIN1. The immunogen is located within the last 50 amino acids of LPIN1.
Predicted Reactive Species	Bovine
Cross Reactivity	LPIN1 antibody is human and mouse reactive. At least four isoforms of LPIN1 are known to exist.
Isotype	IgG
Form	Liquid
Concentration	1 mg/mL
Purification	LPIN1 Antibody is affinity chromatography purified via peptide column.
Suggested Dilutions	LPIN1 antibody can be used for detection of LPIN1 by Western blot at 1 - 2 ug/mL.

Antibody validated: Western Blot in human samples; Immunohistochemistry in human samples and Immunofluorescence in human samples. All other applications and species not yet tested. Optimal dilutions for each application should be determined by the researcher.

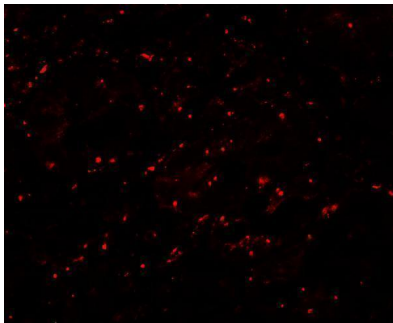
## Anti-LPIN1 Antibody (A02467) Images



Western blot analysis of LPIN1 in K562 cell lysate with LPIN1 antibody at 1 ug/mL.



Immunohistochemistry of LPIN1 in human small intestine tissue with LPIN1 antibody at 5 ug/ml.



Immunofluorescence of LPIN1 in human small intestine tissue with LPIN1 antibody at 20 ug/ml.

### Submit a product review to [Biocompare.com](https://www.biocompare.com)

Submit a review of this product to [Biocompare.com](https://www.biocompare.com) to receive a \$20 Amazon.com giftcard! Your reviews help your fellow scientists make the right decisions. Thank you for your contribution.



Anti-LPIN1 Antibody

For Research Use Only. Not for use in diagnostic procedures.