

Anti-Betatrophin ANGPTL8 Antibody

Catalog Number: A02471-1

About C19ORF80

The Betatrophin protein, also known as the hepatocellular carcinoma-associated protein TD26, is an adipocyte- and liver-enriched insulin targeted gene that is thought to play a role in lipid metabolism by regulating serum triglyceride levels (1,2). Betatrophin is closely related to the angiotensin-like (ANGPTL) protein family. Betatrophin mRNA increases in the cold environment and after treatment with a high-fat diet, while its mRNA levels decrease in response to fasting, suggesting that it may play a role in mediating thermogenesis and energy homeostasis (3).

Overview

Product Name	Anti-Betatrophin ANGPTL8 Antibody
Reactive Species	Human, Mouse, Rat
Description	Boster Bio Anti-Betatrophin ANGPTL8 Antibody (Catalog # A02471-1). Tested in ELISA, WB, IHC-P, IF applications. This antibody reacts with Human, Mouse, Rat.
Application	ELISA, IF, IHC-P, WB
Clonality	Polyclonal Clone: SK7
Formulation	Betatrophin antibody is supplied in PBS containing 0.02% sodium azide.
Storage Instructions	Betatrophin antibody can be stored at 4°C for three months and -20°C, stable for up to one year.
Host	Rabbit
Uniprot ID	Q6UXH0

Technical Details

Immunogen	Betatrophin antibody was raised against a 16 amino acid peptide near the amino terminus of human Betatrophin. The immunogen is located within amino acids 40 - 90 of Betatrophin.
Predicted Reactive Species	Bovine
Cross Reactivity	Betatrophin antibody is human, mouse and rat reactive. At least three isoforms of Betatrophin are known to exist; this antibody will detect the two largest isoforms.
Isotype	IgG
Form	Liquid
Concentration	1 mg/mL
Purification	Betatrophin antibody is affinity chromatography purified via peptide column.
Suggested Dilutions	Dilute the sample so that the expected range of concentrations fall within the detection range of this

kit.

If the expected range of concentration is unknown, a pilot test should be conducted to decide the optimal dilution ratio for your samples.

Some PubMed article(s) citing the expression level of this target are as follows:

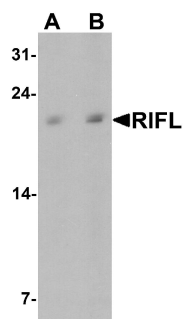
Boster Bio's internal QC testing used:

Betatrophin antibody can be used for detection of Betatrophin by Western blot at 1 - 2 ug/ml.

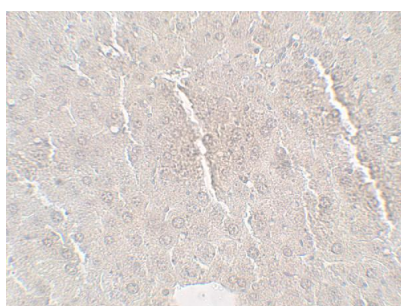
Antibody can also be used for Immunohistochemistry starting at 5 ug/mL. For immunofluorescence start at 20 ug/mL.

Antibody validated: Western Blot in rat samples; Immunohistochemistry in mouse and rat samples and Immunofluorescence in rat samples. All other applications and species not yet tested. Optimal dilutions for each application should be determined by the researcher.

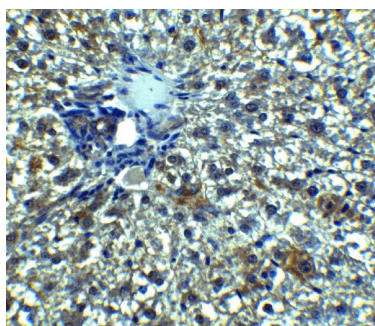
Anti-Betatrophin ANGPTL8 Antibody (A02471-1) Images



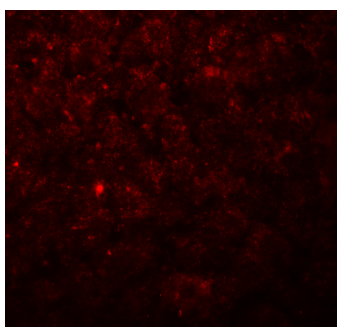
Western blot analysis of Betatrophin in rat liver tissue lysate with Betatrophin antibody at (A) 1 and (B) 2 ug/ml.



Immunohistochemistry of Betatrophin in mouse liver tissue with Betatrophin antibody at 5 ug/mL.



Immunohistochemistry of Betatrophin in rat liver tissue with Betatrophin Antibody at 5 ug/mL.



Immunofluorescence of Betatrophin in rat liver tissue with Betatrophin Antibody at 20 ug/mL.

Submit a product review to Biocompare.com

Submit a review of this product to Biocompare.com to receive a \$20 Amazon.com giftcard! Your reviews help your fellow scientists make the right decisions. Thank you for your contribution.



Anti-Betatrophin ANGPTL8 Antibody