

## Anti-Nudel NDEL1 Antibody

Catalog Number: A02478

### About NDEL1

Nudel was initially discovered as a protein homologous to *Aspergillus* NUDE and that associated with Lis1 and polyprotein complex cytoplasmic dynein, both of which have been linked to neuronal development and migration. It was later shown to be a substrate of cdk5, a kinase known to be critical during neuronal migration; phosphorylation of Nudel by cdk5 affects its localization in neurons and affects neuritic morphology. It is thought that together with Lis1, Nudel regulates cytoplasmic dynein, a large polyprotein complex, in neuronal migration and mitosis through direct interactions. Similar interactions are thought to also play a role in membrane traffic in other cells as disruption of Nudel expression through RNA interference perturbed normal endomembrane flux and resulted in the fragmentation of the Golgi apparatus.

### Overview

Product Name	Anti-Nudel NDEL1 Antibody
Reactive Species	Human, Mouse
Description	Boster Bio Anti-Nudel NDEL1 Antibody (Catalog # A02478). Tested in ELISA, WB, ICC, IF applications. This antibody reacts with Human, Mouse.
Application	ELISA, IF, ICC, WB
Clonality	Polyclonal
Formulation	Nudel Antibody is supplied in PBS containing 0.02% sodium azide.
Storage Instructions	Nudel antibody can be stored at 4°C for three months and -20°C, stable for up to one year. Avoid repeated freeze-thaw cycles. Antibodies should not be exposed to prolonged high temperatures.
Host	Rabbit
Uniprot ID	Q9GZM8

### Technical Details

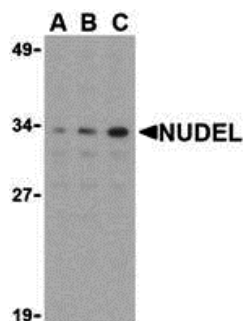
Immunogen	Nudel antibody was raised against a peptide corresponding to 15 amino acids near the amino terminus of human Nudel. The immunogen is located within the first 50 amino acids of Nudel.
Predicted Reactive Species	Chicken, Rabbit, Rat
Isotype	IgG
Form	Liquid
Concentration	1 mg/mL
Purification	Nudel Antibody is affinity chromatography purified via peptide column.

**Suggested Dilutions**

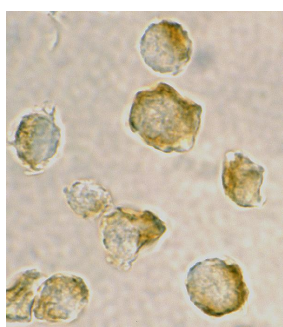
Nudel antibody can be used for detection of Nudel by Western blot at 0.5 - 2 ug/mL. Antibody can also be used for immunocytochemistry starting at 2 ug/mL. For immunofluorescence start at 10 ug/mL.

Antibody validated: Western Blot in human samples; Immunocytochemistry in human samples and Immunofluorescence in human samples. All other applications and species not yet tested. Optimal dilutions for each application should be determined by the researcher.

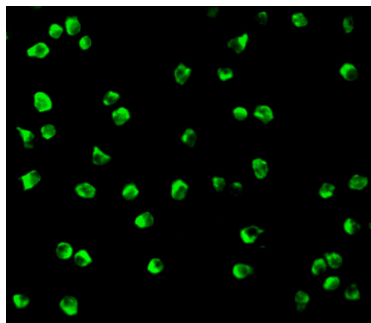
## Anti-Nudel NDEL1 Antibody (A02478) Images



Western blot analysis of Nudel in Jurkat whole cell lysate with Nudel antibody at (A) 0.5, (B) 1, or (C) 2 ug/mL.



Immunocytochemistry of Nudel in Jurkat cells with Nudel antibody at 2 ug/mL.



Immunofluorescence of Nudel in Jurkat cells with Nudel antibody at 10 ug/mL.

### Submit a product review to [Biocompare.com](https://www.biocompare.com)

Submit a review of this product to [Biocompare.com](https://www.biocompare.com) to receive a \$20 Amazon.com giftcard! Your reviews help your fellow scientists make the right decisions. Thank you for your contribution.



Anti-Nudel NDEL1 Antibody

For Research Use Only. Not for use in diagnostic procedures.