

Anti-EPAC1 RAPGEF3 Antibody

Catalog Number: A02483

About RAPGEF3

EPAC1, also known as Rap guanine nuclear exchange factor 3 and cAMPGEF-I, is widely expressed but most prominently in brain, heart, kidney, pancreas, spleen, ovary, thyroid and spinal cord. EPAC1 is a cAMP-binding protein with intrinsic guanine nuclear exchange factor activity that couples cAMP production to the activation of Rap, a GTPase belonging to the Ras family. This activation of Rap influences numerous cellular processes such as integrin-mediated cell adhesion, vascular endothelial barrier formation, and cardiac myocyte gap junction formation. Recently, EPAC1 has been suggested to also be involved in the cAMP-dependent regulation of ion channel formation, intracellular Ca⁺⁺ signalling, ion transporter activity, and exocytosis.

Overview

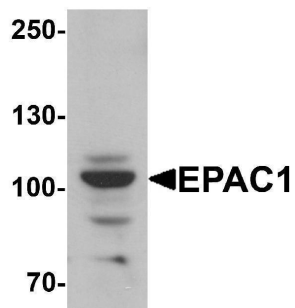
Product Name	Anti-EPAC1 RAPGEF3 Antibody
Reactive Species	Human, Mouse, Rat
Description	Boster Bio Anti-EPAC1 RAPGEF3 Antibody (Catalog # A02483). Tested in ELISA, WB, IHC-P, IF applications. This antibody reacts with Human, Mouse, Rat.
Application	ELISA, IF, IHC-P, WB
Clonality	Polyclonal
Formulation	EPAC1 Antibody is supplied in PBS containing 0.02% sodium azide.
Storage Instructions	EPAC1 antibody can be stored at 4°C for three months and -20°C, stable for up to one year. Avoid repeated freeze-thaw cycles. Antibodies should not be exposed to prolonged high temperatures.
Host	Rabbit
Uniprot ID	O95398

Technical Details

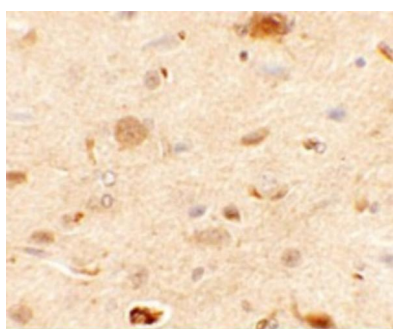
Immunogen	EPAC1 antibody was raised against an 18 amino acid synthetic peptide near the amino terminus of human EPAC1. The immunogen is located within amino acids 60 - 110 of EPAC1.
Predicted Reactive Species	Chicken, Rabbit, Rat
Cross Reactivity	At least two isoforms of EPAC1 are known to exist; this antibody will detect both isoforms. EPAC1 antibody is predicted to not cross-react with EPAC2.
Isotype	IgG
Form	Liquid
Concentration	1 mg/mL

Purification	EPAC1 Antibody is affinity chromatography purified via peptide column.
Suggested Dilutions	EPAC1 antibody can be used for detection of EPAC1 by Western blot at 1 ug/mL. Antibody can also be used for immunohistochemistry starting at 2.5 ug/mL. For immunofluorescence start at 20 ug/mL. Antibody validated: Western Blot in rat samples; Immunohistochemistry in rat samples and Immunofluorescence in rat samples. All other applications and species not yet tested. Optimal dilutions for each application should be determined by the researcher.

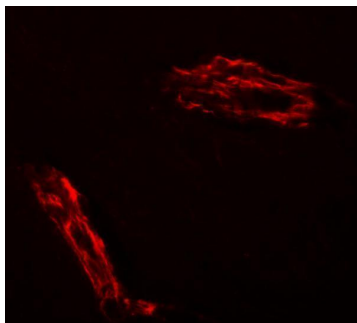
Anti-EPAC1 RAPGEF3 Antibody (A02483) Images



Western blot analysis of EPAC1 in rat skeletal muscle tissue lysate with EPAC1 antibody at 1 ug/mL.



Immunohistochemistry of EPAC1 in rat brain tissue with EPAC1 antibody at 2.5 ug/mL.



Immunofluorescence of EPAC1 in rat brain tissue with EPAC1 antibody at 20 ug/mL.

Submit a product review to [Biocompare.com](https://www.biocompare.com)

Submit a review of this product to [Biocompare.com](https://www.biocompare.com) to receive a \$20 Amazon.com giftcard! Your reviews help your fellow scientists make the right decisions. Thank you for your contribution.



Anti-EPAC1 RAPGEF3 Antibody

For Research Use Only. Not for use in diagnostic procedures.