

Anti-EZH1 Antibody

Catalog Number: A02494

About EZH1

EZH1 was initially identified as a homolog of the drosophila Enhancer of Zeste through transcription mapping of chromosome 17q21. Both EZH1 and the related protein EZH2 can form complexes with the noncanonical Polycomb repressive complex-2 (PRC2) and maintain repressive chromatin, but the PRC2-EZH1 complex mediates methylation of histone H3. Both EZH1 and EZH2 are thought to function in the maintenance of embryonic stem cell pluripotency and plasticity and recently have been shown to be essential for hair follicle homeostasis and wound repair.

Overview

Product Name	Anti-EZH1 Antibody
Reactive Species	Human, Mouse, Rat
Description	Boster Bio Anti-EZH1 Antibody (Catalog # A02494). Tested in ELISA, WB, IHC-P, IF applications. This antibody reacts with Human, Mouse, Rat.
Application	ELISA, IF, IHC-P, WB
Clonality	Polyclonal
Formulation	EZH1 Antibody is supplied in PBS containing 0.02% sodium azide.
Storage Instructions	EZH1 antibody can be stored at 4°C for three months and -20°C, stable for up to one year. Avoid repeated freeze-thaw cycles. Antibodies should not be exposed to prolonged high temperatures.
Host	Rabbit
Uniprot ID	Q92800

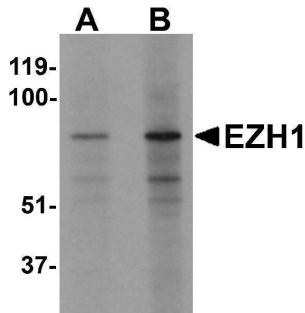
Technical Details

Immunogen	EZH1 antibody was raised against an 18 amino acid synthetic peptide near the amino terminus of human EZH1. The immunogen is located within amino acids 180 - 230 of EZH1.
Predicted Reactive Species	Bovine
Cross Reactivity	Multiple isoforms of EZH1 are known to exist. EZH1 antibody is predicted to not cross-react with EZH2
Isotype	IgG
Form	Liquid
Concentration	1 mg/mL
Purification	EZH1 Antibody is affinity chromatography purified via peptide column.

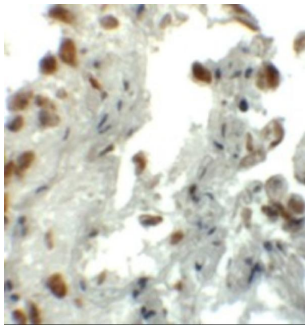
Suggested Dilutions

EZH1 antibody can be used for detection of EZH1 by Western blot at 1 - 2 ug/mL. Antibody can also be used for immunohistochemistry starting at 5 ug/mL. For immunofluorescence start at 20 ug/mL. Antibody validated: Western Blot in mouse samples; Immunohistochemistry in human samples and Immunofluorescence in human samples. All other applications and species not yet tested. Optimal dilutions for each application should be determined by the researcher.

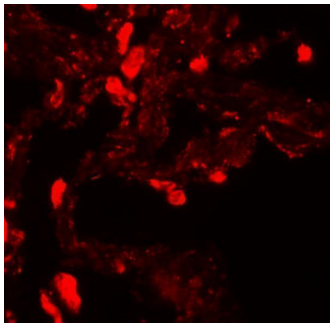
Anti-EZH1 Antibody (A02494) Images



Western blot analysis of EZH1 in mouse lung tissue lysate with EZH1 antibody at (A) 1 and (B) 2 ug/mL



Immunohistochemistry of EZH1 in human lung tissue with EZH1 antibody at 5 ug/mL.



Immunofluorescence of EZH1 in human lung tissue with EZH1 antibody at 20 ug/mL.

Submit a product review to [Biocompare.com](https://www.biocompare.com)

Submit a review of this product to [Biocompare.com](https://www.biocompare.com) to receive a \$20 Amazon.com giftcard! Your reviews help your fellow scientists make the right decisions. Thank you for your contribution.



Anti-EZH1 Antibody

For Research Use Only. Not for use in diagnostic procedures.