

Anti-NTAL/LAT2 Antibody Picoband®

Catalog Number: A02496-1

About LAT2

Linker for activation of T-cells family member 2, also known as WBSR5 or NTAL is a protein that in humans is encoded by the LAT2 gene. It is mapped to 7q11.23. It has been found that NTAL associated with GRB2, SOS1 and GAB1 after B-cell receptor activation. Phosphorylation of NTAL was strongest in the presence of LCK, ZAP70, SYK, or LYNLAT2. NTAL is a structural and possibly a functional homolog of LAT in non-T cells. It also has been found that BLNK and LAT2 in B cells are a functionally equivalent pair to SLP76 and LAT in T cells. This gene consists of at least 14 exons, and its alternative splicing generates 3 transcript variants, all encoding the same protein.

Overview

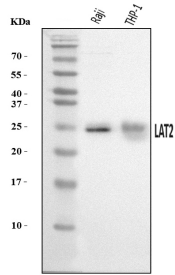
Product Name	Anti-NTAL/LAT2 Antibody Picoband®
Reactive Species	Human
Description	Boster Bio Anti-NTAL/LAT2 Antibody Picoband® catalog # A02496-1. Tested in ELISA, WB applications. This antibody reacts with Human. The brand Picoband indicates this is a premium antibody that guarantees superior quality, high affinity, and strong signals with minimal background in Western blot applications. Only our best-performing antibodies are designated as Picoband, ensuring unmatched performance.
Application	ELISA, WB
Clonality	Polyclonal
Formulation	Each vial contains 4 mg Trehalose, 0.9 mg NaCl, 0.2 mg Na ₂ HPO ₄ .
Storage Instructions	At -20°C for one year from date of receipt. After reconstitution, at 4°C for one month. It can also be aliquotted and stored frozen at -20°C for six months. Avoid repeated freezing and thawing.
Host	Rabbit
Uniprot ID	Q9GZY6

Technical Details

Immunogen	E.coli-derived human NTAL/LAT2 recombinant protein (Position: R46-S217).
Recommended Detection Systems	Boster recommends Enhanced Chemiluminescent Kit with anti-Rabbit IgG (EK1002) for Western blot.
Cross Reactivity	No cross-reactivity with other proteins.
Isotype	Rabbit IgG
Form	Lyophilized
Concentration	Adding 0.2 ml of distilled water will yield a concentration of 500 ug/ml.

Purification	Immunogen affinity purified.
Suggested Dilutions	Western blot, 0.25-0.5 ug/ml, Human ELISA, 0.1-0.5 ug/ml, -

Anti-NTAL/LAT2 Antibody Picoband® (A02496-1) Images



Western blot analysis of NTAL/LAT2 using anti-NTAL/LAT2 antibody (A02496-1). Electrophoresis was performed on a 5-20% SDS-PAGE gel at 70V (Stacking gel) / 90V (Resolving gel) for 2-3 hours. The sample well of each lane was loaded with 30 ug of sample under reducing conditions. Lane 1: human Raji whole cell lysates, Lane 2: human THP-1 whole cell lysates. After electrophoresis, proteins were transferred to a nitrocellulose membrane at 150 mA for 50-90 minutes. Blocked the membrane with 5% non-fat milk/TBS for 1.5 hour at RT. The membrane was incubated with rabbit anti-NTAL/LAT2 antigen affinity purified polyclonal antibody (Catalog # A02496-1) at 0.5 ug/mL overnight at 4°C, then washed with TBS-0.1%Tween 3 times with 5 minutes each and probed with a goat anti-rabbit IgG-HRP secondary antibody at a dilution of 1:5000 for 1.5 hour at RT. The signal is developed using an Enhanced Chemiluminescent detection (ECL) kit (Catalog # EK1002) with Tanon 5200 system. A specific band was detected for NTAL/LAT2 at approximately 27 kDa. The expected band size for NTAL/LAT2 is at 27 kDa.

Submit a product review to Biocompare.com

Submit a review of this product to Biocompare.com to receive a \$20 Amazon.com giftcard! Your reviews help your fellow scientists make the right decisions. Thank you for your contribution.



Anti-NTAL/LAT2 Antibody

For Research Use Only. Not for use in diagnostic procedures.