

## Anti-S100 A1 Antibody

Catalog Number: A02503

### About S100A1

Weakly binds calcium but binds zinc very tightly-distinct binding sites with different affinities exist for both ions on each monomer. Physiological concentrations of potassium ion antagonize the binding of both divalent cations, especially affecting high-affinity calcium-binding sites. May mediate calcium-dependent regulation on many physiological processes by interacting with other proteins, such as TPR-containing proteins, and modulating their activity.

Patrick Most, J. Biol. Chem., Nov 2003; 278: 48404 - 48412.

Miki Okada, J. Biol. Chem., Feb 2004; 279: 4221 - 4233.

Melanie Boerries, Mol. Cell. Biol., Jun 2007; 27: 4365 - 4373.

Patrick Most, J. Clin. Invest., Dec 2004; 114: 1550 - 1563.

### Overview

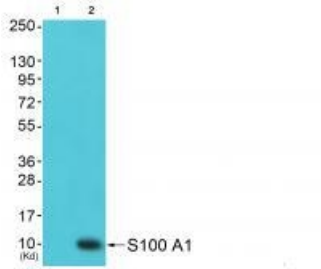
Product Name	Anti-S100 A1 Antibody
Reactive Species	Human, Mouse, Rat
Description	Boster Bio Anti-S100 A1 Antibody (Catalog # A02503). Tested in WB, IHC, IF applications. This antibody reacts with Human, Mouse, Rat.
Application	IF, IHC, WB
Clonality	Polyclonal
Formulation	Rabbit IgG in phosphate buffered saline (without Mg <sup>2+</sup> and Ca <sup>2+</sup> ), pH 7.4, 150mM NaCl, 0.02% sodium azide and 50% glycerol.
Storage Instructions	Store at -20°C for one year. For short term storage and frequent use, store at 4°C for up to one month. Avoid repeated freeze-thaw cycles.
Host	Rabbit
Uniprot ID	P23297

### Technical Details

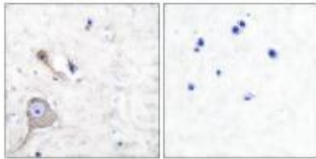
Immunogen	Synthesized peptide derived from human S100 A1.
Predicted Reactive Species	Boar, Bovine, Canine, Golden Hamster
Isotype	IgG
Form	Liquid
Concentration	1 mg/ml

Purification	The antibody was affinity-purified from rabbit antiserum by affinity-chromatography using epitope-specific immunogen.
Suggested Dilutions	Dilute the sample so that the expected range of concentrations fall within the detection range of this kit. If the expected range of concentration is unknown, a pilot test should be conducted to decide the optimal dilution ratio for your samples. Some PubMed article(s) citing the expression level of this target are as follows: Boster Bio's internal QC testing used: Western blotting: 1:500~1:3000 Immunohistochemistry: 1:50~1:100 Immunofluorescence: 1:100~1:500

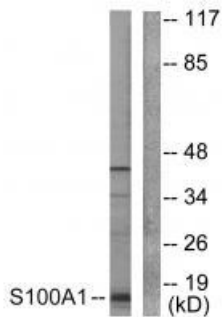
## Anti-S100 A1 Antibody (A02503) Images



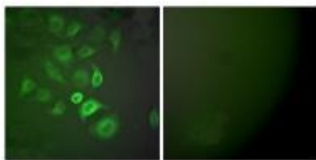
Western blot analysis of extracts from 293 cells (Lane 2), using S100 A1 antibody A02503. The lane on the left is treated with synthesized peptide.



Immunohistochemical analysis of paraffin-embedded human brain tissue using S100 A1 antibody A02503.



Western blot analysis of extracts from A549 cells, using S100 A1 antibody A02503.



Immunofluorescence analysis of A549 cells, using S100 A1 antibody A02503.

## 12 Publications Citing This Product

1. PubMed ID: 10.1155/2019/6452684, Microvesicles Derived from Human Embryonic Neural Stem Cells Inhibit the Apoptosis of HL-1 Cardiomyocytes by Promoting Autophagy and Regulating AKT and mTOR via Transporting HSP-70

2. PubMed ID: 10.1002/syn.21974, Synergistic effects of G-CSF and bone marrow stromal cells on nerve regeneration with acellular nerve xenografts

3. PubMed ID: 10.1016/j.intimp.2009.07.014, Coxsackievirus B3 infection promotes generation of myeloid dendritic cells from bone marrow and accumulation in the myocardium

Visit [bosterbio.com/anti-s100-a1-antibody-a02503-boster.html](http://bosterbio.com/anti-s100-a1-antibody-a02503-boster.html) to see all 12 publications.

## Submit a product review to Biocompare.com

Submit a review of this product to Biocompare.com to receive a \$20 Amazon.com giftcard! Your reviews help your fellow scientists make the right decisions. Thank you for your contribution.



Anti-S100 A1 Antibody