

## Anti-Stk39 Antibody

Catalog Number: A02516

### About STK39

The serine/threonine kinase Stk39 belongs to the STE20 family, a group of kinases that are known to interact with inflammation-related kinases (such as p38, JNK, NKCC1, PKC-theta, WNK and MLCK), and with transcription factor AP-1. The STE 20 family is involved in diverse biological phenomena, including cell differentiation, cell transformation/ proliferation, cytoskeleton rearrangement, and the regulation of ion transporters. STK39 contains an N-terminal series of proline and alanine repeats (PAPA box), followed by a serine/threonine kinase catalytic domain and is abundantly expressed in the brain. STK39 is activated in response to hypotonic stress, leading to phosphorylation of several cation-chloride-coupled co-transporters. The catalytically active kinase specifically activates the p38 MAP kinase pathway, and its interaction with p38 decreases upon cellular stress, suggesting that this kinase may serve as an intermediate in the response to cellular stress. Recent studies show that STK39 tend to be a novel candidate gene for autism and hypertension.

### Overview

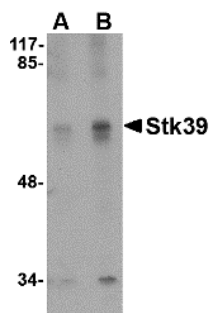
|                      |  |
|----------------------|--|
| Product Name         | Anti-Stk39 Antibody  |
| Reactive Species     | Human, Mouse   |
| Description          | Boster Bio Anti-Stk39 Antibody (Catalog # A02516). Tested in ELISA, WB, IHC-P, IF applications. This antibody reacts with Human, Mouse.  |
| Application          | ELISA, IF, IHC-P, WB   |
| Clonality            | Polyclonal   |
| Formulation          | Stk39 Antibody is supplied in PBS containing 0.02% sodium azide.   |
| Storage Instructions | Stk39 antibody can be stored at 4°C for three months and -20°C, stable for up to one year. Avoid repeated freeze-thaw cycles. Antibodies should not be exposed to prolonged high temperatures. |
| Host                 | Rabbit   |
| Uniprot ID           | Q9UEW8   |

### Technical Details

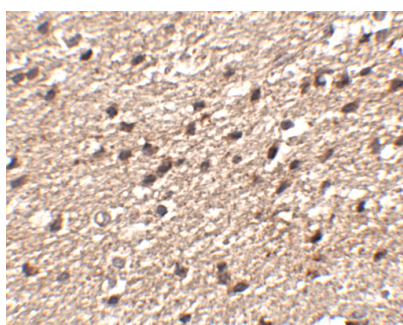
|                            |  |
|----------------------------|--|
| Immunogen                  | Stk39 antibody was raised against a 19 amino acid synthetic peptide from near the carboxy terminus of human Stk39. The immunogen is located within amino acids 450 - 500 of Stk39. |
| Predicted Reactive Species | Pig, Rat   |
| Isotype                    | IgG  |
| Form                       | Liquid   |
| Concentration              | 1 mg/mL  |

|                     |   |
|---------------------|---|
| Purification        | Stk39 Antibody is affinity chromatography purified via peptide column.  |
| Suggested Dilutions | Stk39 antibody can be used for detection of stk39 by Western blot at 1 - 2 ug/mL. Antibody can also be used for immunohistochemistry starting at 2.5 ug/mL. For immunofluorescence start at 20 ug/mL. Antibody validated: Western Blot in human samples; Immunohistochemistry in human samples and Immunofluorescence in human samples. All other applications and species not yet tested. Optimal dilutions for each application should be determined by the researcher. |

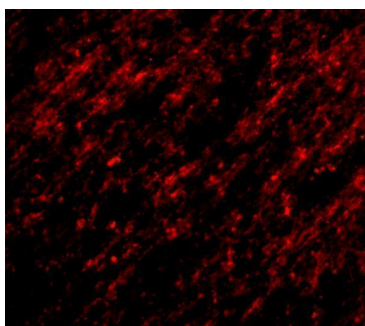
## Anti-Stk39 Antibody (A02516) Images



Western blot analysis of Stk39 in SK-N-SH cell lysate with Stk39 antibody at (A) 1 and (B) 2 ug/mL.



Immunohistochemistry of Stk39 in human brain tissue with Stk39 antibody at 2.5 ug/mL.



Immunofluorescence of Stk39 in human brain tissue with Stk39 antibody at 20 ug/mL.

### Submit a product review to [Biocompare.com](https://www.biocompare.com)

Submit a review of this product to [Biocompare.com](https://www.biocompare.com) to receive a \$20 Amazon.com giftcard! Your reviews help your fellow scientists make the right decisions. Thank you for your contribution.



Anti-Stk39 Antibody

For Research Use Only. Not for use in diagnostic procedures.