

## Anti-HINT1 Antibody

Catalog Number: A02557

### About HINT1

Histidine triad nucleotide-binding protein 1 (HINT1) is a member of the histidine triad (HIT) protein family, a group of small nucleotide-binding and -hydrolyzing proteins. HINT1 interacts with several diverse proteins and has been suggested to have tumor suppressive activities. HINT1 catalyzes the hydrolysis of adenosine 5'-monophosphoramidate substrates such as AMP-morpholidate, but its enzymatic function does not appear to play a role in its tumor suppression. Recent experiments demonstrate that HINT1 forms a complex with POSH and JNK in vivo, inhibiting AP-1 activity and the phosphorylation of c-Jun, and this action could contribute to the tumor suppressor activity of HINT1. Other studies raise the possibility of HINT1 as a candidate gene for schizophrenia.

### Overview

Product Name	Anti-HINT1 Antibody
Reactive Species	Human, Mouse, Rat
Description	Boster Bio Anti-HINT1 Antibody (Catalog # A02557). Tested in ELISA, WB, ICC applications. This antibody reacts with Human, Mouse, Rat.
Application	ELISA, ICC, WB
Clonality	Polyclonal
Formulation	HINT1 Antibody is supplied in PBS containing 0.02% sodium azide.
Storage Instructions	HINT1 antibody can be stored at 4°C for three months and -20°C, stable for up to one year. Avoid repeated freeze-thaw cycles. Antibodies should not be exposed to prolonged high temperatures.
Host	Rabbit
Uniprot ID	P49773

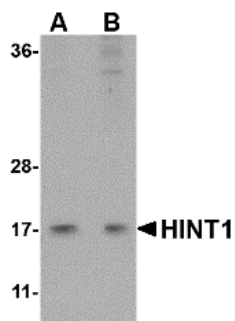
### Technical Details

Immunogen	HINT1 antibody was raised against a 17 amino acid synthetic peptide near the center of the human HINT1. The immunogen is located within the last 50 amino acids of HINT1.
Predicted Reactive Species	Bovine, Rabbit
Isotype	IgG
Form	Liquid
Concentration	1 mg/mL
Purification	HINT1 Antibody is affinity chromatography purified via peptide column.

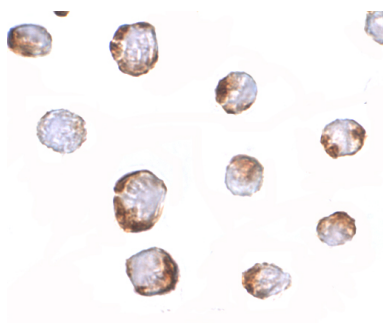
Suggested Dilutions

HINT1 antibody can be used for detection of HINT1 by Western blot at 1 - 2 ug/mL. Antibody can also be used for immunocytochemistry starting at 2.5 ug/mL.  
Antibody validated: Western Blot in human samples and Immunocytochemistry in human samples.  
All other applications and species not yet tested. Optimal dilutions for each application should be determined by the researcher.

## Anti-HINT1 Antibody (A02557) Images



Western blot analysis of HINT1 in Jurkat lysate with HINT1 antibody at (A) 1 and (B) 2 ug/mL.



Immunocytochemistry of HINT1 in Jurkat cells with HINT1 antibody at 2.5 ug/mL.

### Submit a product review to [Biocompare.com](https://www.biocompare.com)

Submit a review of this product to [Biocompare.com](https://www.biocompare.com) to receive a \$20 Amazon.com giftcard! Your reviews help your fellow scientists make the right decisions. Thank you for your contribution.



Anti-HINT1 Antibody

For Research Use Only. Not for use in diagnostic procedures.