

## Anti-SESTRIN2 SESN2 Antibody

Catalog Number: A02558

### About SESN2

SESTRIN2, also known as Hi95, is a member of the sestrin family of PA26-related proteins and is induced following DNA damage or oxidative stress (1). SESTRIN2 and the related protein SESTRIN1 interact with the NRF2 suppressor KEAP1, the autophagy substrate p62 and the ubiquitin ligase RBX1 to protect cells against oxidative stress by activating NRF2 and promoting the p62-dependent autophagic degradation of KEAP1 (2). SESTRIN2 also negatively regulates TOR signaling by activating AMP-activated protein kinase (AMPK) and TSC2 phosphorylation (3), thereby protecting cells against energetic stress-induced death (4).

### Overview

Product Name	Anti-SESTRIN2 SESN2 Antibody
Reactive Species	Human, Mouse, Rat
Description	Boster Bio Anti-SESTRIN2 SESN2 Antibody (Catalog # A02558). Tested in ELISA, WB, IHC-P, IF applications. This antibody reacts with Human, Mouse, Rat.
Application	ELISA, IF, IHC-P, WB
Clonality	Polyclonal
Formulation	SESTRIN2 antibody is supplied in PBS containing 0.02% sodium azide.
Storage Instructions	SESTRIN2 antibody can be stored at 4°C for three months and -20°C, stable for up to one year.
Host	Rabbit
Uniprot ID	P58004

### Technical Details

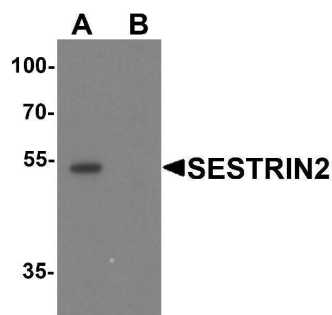
Immunogen	SESTRIN2 antibody was raised against a 19 amino acid peptide near the center of human SESTRIN2. The immunogen is located within amino acids 220 - 270 of SESTRIN2.
Predicted Reactive Species	Bovine
Cross Reactivity	SESTRIN2 antibody is human, mouse and rat reactive. At least two isoforms of SESTRIN2 are known to exist; this antibody will detect both isoforms. SESTRIN2 antibody is predicted to not cross-react with SESTRIN1.
Isotype	IgG
Form	Liquid
Concentration	1 mg/mL
Purification	SESTRIN2 antibody is affinity chromatography purified via peptide column.

Suggested Dilutions

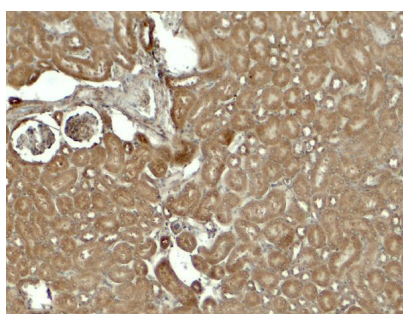
SESTRIN2 antibody can be used for detection of SESTRIN2 by Western blot at 1 - 2 ug/ml. Antibody can also be used for immunohistochemistry starting at 5 ug/mL. For immunofluorescence start at 20 ug/mL.

Antibody validated: Western Blot in mouse samples; Immunohistochemistry in mouse samples and Immunofluorescence in mouse samples. All other applications and species not yet tested. Optimal dilutions for each application should be determined by the researcher.

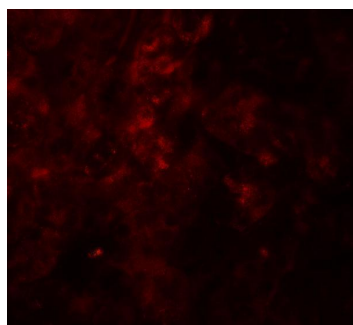
## Anti-SESTRIN2 SESN2 Antibody (A02558) Images



Western blot analysis of SESTRIN2 in mouse kidney tissue lysate with SESTRIN2 antibody at 1 ug/ml in (A) the absence and (B) the presence of blocking peptide.



Immunohistochemistry of SESTRIN2 in mouse kidney tissue with SESTRIN2 antibody at 5 ug/ml.



Immunofluorescence of SESTRIN2 in mouse kidney tissue with SESTRIN2 antibody at 20 ug/ml.

### Submit a product review to Biocompare.com

Submit a review of this product to Biocompare.com to receive a \$20 Amazon.com giftcard! Your reviews help your fellow scientists make the right decisions. Thank you for your contribution.



Anti-SESTRIN2 SESN2 Antibody

For Research Use Only. Not for use in diagnostic procedures.