

Anti-TPI1 Antibody (C-term)

Catalog Number: A02559-1

About TPI1

TPI1 is an enzyme, consisting of two identical proteins, which catalyzes the isomerization of glyceraldehydes 3-phosphate (G3P) and dihydroxy-acetone phosphate (DHAP) in glycolysis and gluconeogenesis.

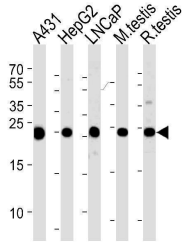
Overview

Product Name	Anti-TPI1 Antibody (C-term)
Reactive Species	Human, Mouse, Rat
Description	Boster Bio Anti-TPI1 Antibody (C-term) (Catalog # A02559-1). Tested in WB, IHC-P, Flow Cytometry application(s). This antibody reacts with Human, Mouse, Rat.
Application	Flow Cytometry, IHC-P, WB
Clonality	Polyclonal
Formulation	Purified polyclonal antibody supplied in PBS with 0.09% (W/V) sodium azide.
Storage Instructions	Maintain refrigerated at 2-8°C for up to 2 weeks. For long-term storage, store at -20°C in small aliquots to prevent freeze-thaw cycles.
Host	Rabbit
Uniprot ID	P60174

Technical Details

Immunogen	This TPI1 antibody is generated from rabbits immunized with a KLH conjugated synthetic peptide between 258-286 amino acids from the C-terminal region of human TPI1.
Predicted Reactive Species	Bovine, Monkey, Rabbit
Isotype	Rabbit IgG
Purification	This antibody is prepared by Saturated Ammonium Sulfate (SAS) precipitation followed by dialysis against PBS.
Suggested Dilutions	WB: 1:1000 IHC-P: 1:50-1:100 FC: 1:10-1:50

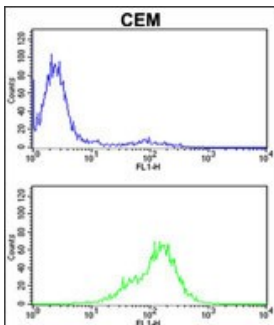
Anti-TPI1 Antibody (C-term) (A02559-1) Images



Western blot analysis of lysates from A431, HepG2, LNCaP cell line and mouse testis, rat testis tissue lysates (from left to right), using TPI1 Antibody (C-term). A02559-1 was diluted at 1:1000 at each lane. A goat anti-rabbit IgG H&L (HRP) at 1:5000 dilution was used as the secondary antibody. Lysate at 35ug per lane.



Formalin-fixed and paraffin-embedded human prostate carcinoma reacted with TPI1 Antibody (C-term), which was peroxidase-conjugated to the secondary antibody, followed by DAB staining. This data demonstrates the use of this antibody for immunohistochemistry; clinical relevance has not been evaluated.



TPI1 Antibody (C-term) flow cytometric analysis of CEM cells (bottom histogram) compared to a negative control cell (top histogram). FITC-conjugated goat-anti-rabbit secondary antibodies were used for the analysis.

Submit a product review to [Biocompare.com](https://www.biocompare.com)

Submit a review of this product to [Biocompare.com](https://www.biocompare.com) to receive a \$20 Amazon.com giftcard! Your reviews help your fellow scientists make the right decisions. Thank you for your contribution.



Anti-TPI1 Antibody (C-term)

For Research Use Only. Not for use in diagnostic procedures.