

## Anti-LT-Beta (V211) LTB Antibody

Catalog Number: A02565-1

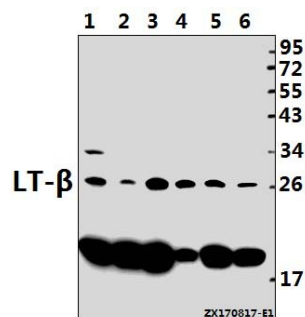
### Overview

Product Name	Anti-LT-Beta (V211) LTB Antibody
Reactive Species	Human, Mouse, Rat
Description	Boster Bio Anti-LT-Beta (V211) LTB Antibody catalog # A02565-1. Tested in WB,IHC,IF applications. This antibody reacts with Human,Mouse,Rat.
Application	IF, IHC, WB
Clonality	Polyclonal
Formulation	Rabbit IgG, 1mg/ml in PBS with 0.02% sodium azide, 50% glycerol, pH7.2
Storage Instructions	Store at -20°C for one year. For short term storage and frequent use, store at 4°C for up to one month. Avoid repeated freeze-thaw cycles.
Host	Rabbit
Uniprot ID	Q06643

### Technical Details

Immunogen	Synthetic peptide, corresponding to amino acids 200-250 of Human LT-beta.
Isotype	IgG
Form	Liquid
Concentration	1 mg/ml
Purification	The antibody was affinity-purified from rabbit antiserum by affinity-chromatography using epitope-specific immunogen and the purity is > 95% (by SDS-PAGE).
Suggested Dilutions	WB: 1:500-1:1000 IHC: 1:50-1:200 IF: 1:50-1:200

## Anti-LT-Beta (V211) LTB Antibody (A02565-1) Images



Western blot (WB) analysis of LT-beta (V211) pAb at 1:500 dilution Lane1:H9C2 whole cell lysate(40ug) Lane2:MEF whole cell lysate(40ug) Lane3:HeLa whole cell lysate(40ug) Lane4:HEK293T whole cell lysate(40ug) Lane5:HepG2 whole cell lysate(40ug) Lane6:A549 whole cell lysate(40ug)

### Submit a product review to Biocompare.com

Submit a review of this product to Biocompare.com to receive a \$20 Amazon.com giftcard! Your reviews help your fellow scientists make the right decisions. Thank you for your contribution.



Anti-LT-Beta (V211) LTB Antibody

For Research Use Only. Not for use in diagnostic procedures.