

## Anti-GEF H1 ARHGEF2 Antibody

Catalog Number: A02572-2

### About ARHGEF2

Acts as transcriptional repressor and plays a role in gene silencing. Does not bind to DNA by itself (. Binds to DNA with a preference for sites containing methylated CpG dinucleotides (in vitro). Binds to a lesser degree DNA containing unmethylated CpG dinucleotides (). Recruits histone deacetylases and DNA methyltransferases.

Hendrich B., Mol. Cell. Biol. 18:6538-6547(1998).

Grimwood J., Nature 428:529-535(2004).

Tatematsu K., Genes Cells 5:677-688(2000).

### Overview

Product Name	Anti-GEF H1 ARHGEF2 Antibody
Reactive Species	Human, Mouse, Rat
Description	Boster Bio Anti-GEF H1 ARHGEF2 Antibody catalog # A02572-2. Tested in WB,ICC,IF,IHC,Flow Cytometry applications. This antibody reacts with Human,Mouse,Rat.
Application	Flow Cytometry, IF, IHC, ICC, WB
Clonality	Polyclonal
Formulation	Rabbit IgG, 1mg/ml in PBS with 0.02% sodium azide, 50% glycerol, pH7.2
Storage Instructions	Store at -20°C for one year. For short term storage and frequent use, store at 4°C for up to one month. Avoid repeated freeze-thaw cycles.
Host	Rabbit
Uniprot ID	Q92974

### Technical Details

Immunogen	Synthesized peptide derived from C-terminal of human MBD3.
Predicted Reactive Species	Boar, Bovine, Canine, Golden Hamster
Isotype	IgG
Form	Liquid
Concentration	1 mg/ml
Purification	ProA affinity purified

**Suggested Dilutions**

Dilute the sample so that the expected range of concentrations fall within the detection range of this kit.

If the expected range of concentration is unknown, a pilot test should be conducted to decide the optimal dilution ratio for your samples.

Some PubMed article(s) citing the expression level of this target are as follows:

Boster Bio's internal QC testing used:

WB: 1:500

ICC: 1:50-1:200

IHC: 1:50-1:200

FC: 1:50-1:100

## Anti-GEF H1 ARHGEF2 Antibody (A02572-2) Images

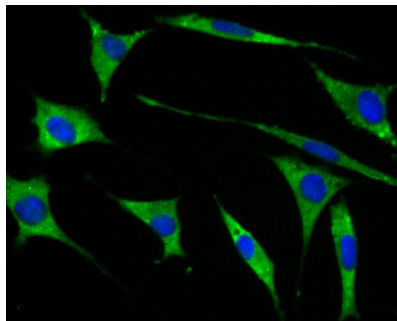


Figure 2. Immunocytochemistry staining of ARHGEF2 using Anti-GEF H1 ARHGEF2 Antibody (A02572-2).

ICC staining GEF H1 in SH-SY-5Y cells (green). The nuclear counter stain is DAPI (blue). Cells were fixed in paraformaldehyde

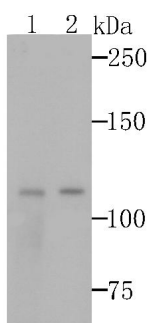


Figure 1. Western blotting validation for Anti-GEF H1 ARHGEF2 Antibody A02572-2

Western blot analysis of GEF H1 on 293T and A431 cells lysates using anti-GEF H1 antibody at 1/500 dilution. Electrophoresis was performed on a SDS-PAGE gel. To determine SDS-PAGE gel concentration

## Submit a product review to Biocompare.com

Submit a review of this product to Biocompare.com to receive a \$20 Amazon.com giftcard! Your reviews help your fellow scientists make the right decisions. Thank you for your contribution.



Anti-GEF H1 ARHGEF2 Antibody