

## Anti-NR4A3/Nor1 Antibody

Catalog Number: A02578-1

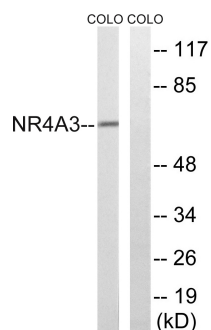
### Overview

Product Name	Anti-NR4A3/Nor1 Antibody
Reactive Species	Human, Mouse, Rat
Description	Boster Bio Anti-NR4A3/Nor1 Antibody (Catalog# A02578-1). Tested in WB, ELISA applications. This antibody reacts with Human, Mouse, Rat.
Application	ELISA, WB
Clonality	Polyclonal
Formulation	PBS containing 50% glycerol, 0.5% stabilizing protein and 0.02% sodium azide. *This antibody is supplied in a stabilized formulation. Compatibility with conjugation reactions depends on the chemistry of the conjugation method used. For conjugation methods that are not compatible with the stabilizing components present in this formulation, a carrier-free antibody format is required.
Storage Instructions	Store at -20°C for one year. For short-term storage and frequent use, store at 4°C for up to one month. Avoid repeated freeze-thaw cycles.
Host	Rabbit
Uniprot ID	Q92570

### Technical Details

Immunogen	A peptide derived from human NR4A3. Immunogen sequence location: 387-436
Cross Reactivity	No cross reactivity with other proteins.
Isotype	Rabbit IgG
Form	Liquid
Concentration	0.5-1mg/ml, actual concentration vary by lot. Use suggested dilution ratio to decide dilution procedure.
Purification	The antibody was purified from rabbit antiserum by affinity-chromatography using immunogen.
Suggested Dilutions	WB 1:500 - 1:2000. ELISA: 1:40000. Not yet tested in other applications.

## Anti-NR4A3/Nor1 Antibody (A02578-1) Images



Western blot analysis of lysates from COLO cells, using NR4A3 Antibody. The lane on the right is blocked with the synthesized peptide.

### Submit a product review to Biocompare.com

Submit a review of this product to Biocompare.com to receive a \$20 Amazon.com giftcard! Your reviews help your fellow scientists make the right decisions. Thank you for your contribution.



Anti-NR4A3/Nor1 Antibody

For Research Use Only. Not for use in diagnostic procedures.