

## Anti-SMURF2 Antibody

Catalog Number: A02585

### About SMURF2

SMURF2 (SMAD ubiquitin regulatory factor 2) is a negative regulator of TGF-beta signaling (1). SMURF1 and SMURF2 are members of HECT domain E3 ubiquitin ligase which are involved in the enzymatic reactions of the Ub conjugating pathway (1,2). SMURF2 is widely expressed and was initially identified as an inhibitor of TGF-beta/BMP signaling by targeting R-Smads and TGF type I receptor for ubiquitination and degradation (3). Studies have shown that SMURF2 functions as a tumor suppressor by maintaining genomic stability through targeting RNF20 (3). SMURF2 associates constitutively with SMAD7 (4).

### Overview

Product Name	Anti-SMURF2 Antibody
Reactive Species	Human, Mouse, Rat
Description	Boster Bio Anti-SMURF2 Antibody (Catalog # A02585). Tested in ELISA, WB, IHC-P, IF applications. This antibody reacts with Human, Mouse, Rat.
Application	ELISA, IF, IHC-P, WB
Clonality	Polyclonal
Formulation	SMURF2 Antibody is supplied in PBS containing 0.02% sodium azide.
Storage Instructions	SMURF2 antibody can be stored at 4°C for three months and -20°C, stable for up to one year.
Host	Rabbit
Uniprot ID	Q9HAU4

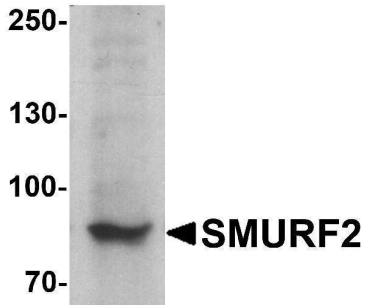
### Technical Details

Immunogen	SMURF2 antibody was raised against a 17 amino acid peptide near the amino terminus of human SMURF2. The immunogen is located within amino acids 140 - 190 of SMURF2.
Predicted Reactive Species	Bovine
Cross Reactivity	SMURF2 antibody is human, mouse and rat reactive. SMURF2 is predicted to not cross-react with SMURF1.
Isotype	IgG
Form	Liquid
Concentration	1 mg/mL
Purification	SMURF2 antibody is affinity chromatography purified via peptide column.

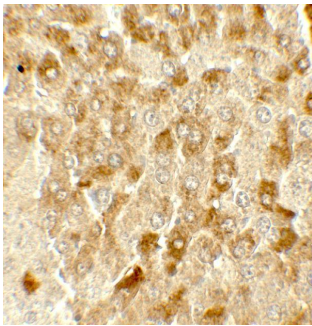
Suggested Dilutions

SMURF2 antibody can be used for detection of SMURF2 by Western blot at 1 - 2 ug/ml. Antibody can also be used for Immunohistochemistry at 2 ug/mL. For Immunofluorescence start at 20 ug/mL. Antibody validated: Western Blot in mouse samples; Immunohistochemistry in human and mouse samples and Immunofluorescence in human and mouse samples. All other applications and species not yet tested. Optimal dilutions for each application should be determined by the researcher.

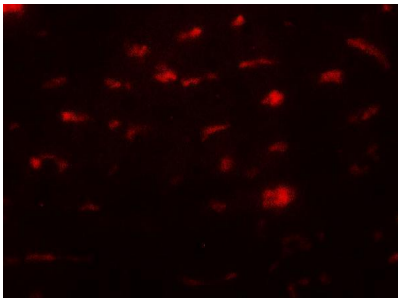
## Anti-SMURF2 Antibody (A02585) Images



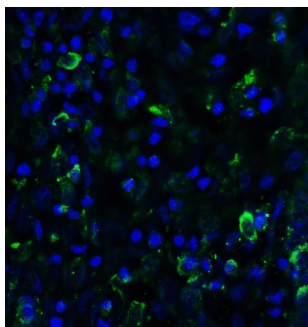
Western blot analysis of SMURF2 in C2C12 cell lysate with SMURF2 antibody at 1 ug/ml.



Immunohistochemistry of SMURF2 in mouse liver tissue with SMURF2 antibody at 5 ug/mL.

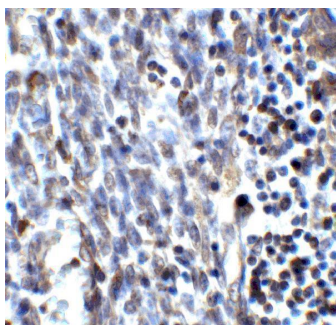
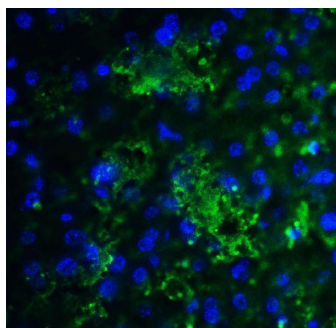


Immunofluorescence of SMURF2 in mouse liver tissue with SMURF2 antibody at 20 ug/mL.

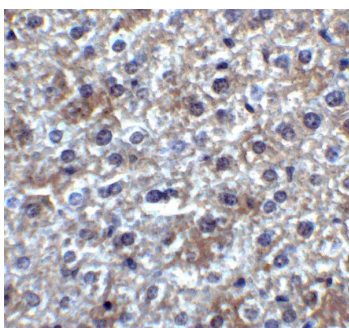


Immunofluorescence of SMURF2 in human uterus tissue with SMURF2 antibody at 20 ug/ml. Green: SMURF2 Antibody (A02585) Blue: DAPI staining

Immunofluorescence of SMURF2 in mouse liver tissue with SMURF2 antibody at 20 ug/ml. Green: SMURF2 Antibody (A02585) Blue: DAPI staining



Immunohistochemistry of SMURF2 in human uterus tissue with SMURF2 antibody at 2 ug/ml.



Immunohistochemistry of SMURF2 in mouse liver tissue with SMURF2 antibody at 2 ug/ml.

## Submit a product review to [Biocompare.com](https://www.biocompare.com)

Submit a review of this product to [Biocompare.com](https://www.biocompare.com) to receive a \$20 Amazon.com giftcard! Your reviews help your fellow scientists make the right decisions. Thank you for your contribution.



### Anti-SMURF2 Antibody

For Research Use Only. Not for use in diagnostic procedures.