

Anti-PLD2 (phospho-Y169) Antibody

Catalog Number: A02586Y169

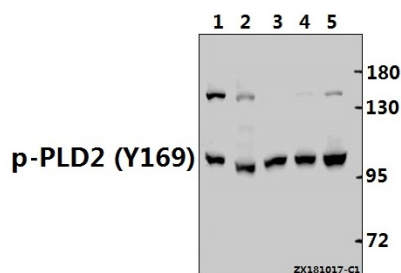
Overview

Product Name	Anti-PLD2 (phospho-Y169) Antibody
Reactive Species	Human, Mouse, Rat
Description	Boster Bio Anti-PLD2 (phospho-Y169) Antibody catalog # A02586Y169. Tested in WB applications. This antibody reacts with Human,Mouse,Rat.
Application	WB
Clonality	Polyclonal
Formulation	Rabbit IgG, 1mg/ml in PBS with 0.02% sodium azide, 50% glycerol, pH7.2
Storage Instructions	Store at -20°C for one year. For short term storage and frequent use, store at 4°C for up to one month. Avoid repeated freeze-thaw cycles.
Host	Rabbit
Uniprot ID	O14939

Technical Details

Immunogen	Synthetic phosphopeptide derived from human PLD2 around the phosphorylation site of Tyrosine 169.
Isotype	IgG
Form	Liquid
Concentration	1 mg/ml
Purification	The antibody was affinity-purified from rabbit antiserum by affinity-chromatography using epitope-specific immunogen and the purity is > 95% (by SDS-PAGE).
Suggested Dilutions	WB: 1:500-1:1000

Anti-PLD2 (phospho-Y169) Antibody (A02586Y169) Images



Western blot (WB) analysis of p-PLD2 (Y169) pAb at 1:500 dilution Lane1:HEK293T whole cell lysate(40ug) Lane2:C6 whole cell lysate(40ug) Lane3:The Embryo tissue lysate of Mouse(40ug) Lane4:A549 whole cell lysate(40ug) Lane5:Hela whole cell lysate(40ug)

Submit a product review to Biocompare.com

Submit a review of this product to Biocompare.com to receive a \$20 Amazon.com giftcard! Your reviews help your fellow scientists make the right decisions. Thank you for your contribution.



Anti-PLD2 (phospho-Y169) Antibody

For Research Use Only. Not for use in diagnostic procedures.