

Anti-DNA-binding protein SATB2 SATB2 Antibody

Catalog Number: A02588

About SATB2

Human special AT-rich sequence-binding protein-2 (SATB2) is a nuclear matrix/scaffold-associated region DNA-binding protein. Like its homolog SATB1, SATB2 selectively binds double-stranded, special AT-rich DNA sequences, but is expressed primarily in a subset of postmitotic, differentiating neurons in the neocortex. Mice deficient in SATB exhibit craniofacial abnormalities and defects in osteoblast differentiation and function. SATB2 also interacts with and enhances the activity of Runx2 and ATF4, two transcription factors that regulate osteoblast differentiation, indicating that SATB2 acts as a molecular node in a transcriptional network regulating skeletal development and osteoblast differentiation. Recent experiments have shown that SATB2 interacts with histone deacetylase 1 and metastasis-associated protein 2, two proteins that are involved in chromatin remodeling, suggesting that SATB2 may also be involved in mediating epigenetic influences during cortical development.

Overview

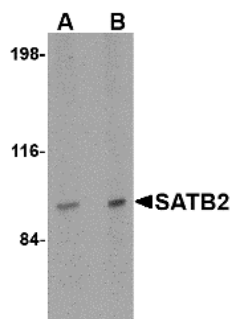
Product Name	Anti-DNA-binding protein SATB2 SATB2 Antibody
Reactive Species	Human, Mouse, Rat
Description	Boster Bio Anti-DNA-binding protein SATB2 SATB2 Antibody (Catalog # A02588). Tested in ELISA, WB, IHC-P, IF applications. This antibody reacts with Human, Mouse, Rat.
Application	ELISA, IF, IHC-P, WB
Clonality	Polyclonal
Formulation	SATB2 Antibody is supplied in PBS containing 0.02% sodium azide.
Storage Instructions	SATB2 antibody can be stored at 4°C for three months and -20°C, stable for up to one year. Avoid repeated freeze-thaw cycles. Antibodies should not be exposed to prolonged high temperatures.
Host	Rabbit
Uniprot ID	Q9UPW6

Technical Details

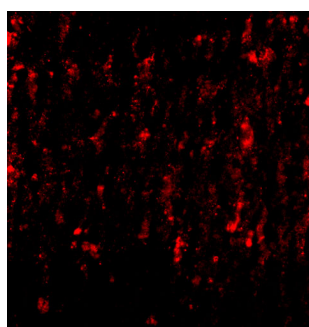
Immunogen	SATB2 antibody was raised against a 16 amino acid synthetic peptide near the amino terminus of the human SATB2. The immunogen is located within the first 50 amino acids of SATB2.
Predicted Reactive Species	Bovine
Cross Reactivity	At least two isoforms of SATB2 are known to exist. This SATB2 antibody will not cross-react with SATB1.
Isotype	IgG
Form	Liquid

Concentration	1 mg/mL
Purification	SATB2 Antibody is affinity chromatography purified via peptide column.
Suggested Dilutions	<p>SATB2 antibody can be used for detection of SATB2 by Western blot at 2 - 4 ug/mL. Antibody can also be used for immunohistochemistry starting at 5 ug/mL. For immunofluorescence start at 20 ug/mL.</p> <p>Antibody validated: Western Blot in mouse samples; Immunohistochemistry in human samples and Immunofluorescence in human samples. All other applications and species not yet tested. Optimal dilutions for each application should be determined by the researcher.</p>

Anti-DNA-binding protein SATB2 SATB2 Antibody (A02588) Images



Western blot analysis of SATB2 in mouse brain tissue lysate with SATB2 antibody at (A) 2 and (B) 4 ug/mL.



Immunofluorescence of SATB2 in Human Brain cells with SATB2 antibody at 20 ug/mL.

Submit a product review to [Biocompare.com](https://www.biocompare.com)

Submit a review of this product to [Biocompare.com](https://www.biocompare.com) to receive a \$20 Amazon.com giftcard! Your reviews help your fellow scientists make the right decisions. Thank you for your contribution.



Anti-DNA-binding protein SATB2 SATB2 Antibody

For Research Use Only. Not for use in diagnostic procedures.