

## Anti-Matriptase (K21) ST14 Antibody

Catalog Number: A02614

### Overview

Product Name	Anti-Matriptase (K21) ST14 Antibody
Reactive Species	Human, Mouse, Rat
Description	Boster Bio Anti-Matriptase (K21) ST14 Antibody catalog # A02614. Tested in WB,IHC,IF,IP applications. This antibody reacts with Human,Mouse,Rat.
Application	IP, IF, IHC, WB
Clonality	Polyclonal
Formulation	Rabbit IgG, 1mg/ml in PBS with 0.02% sodium azide, 50% glycerol, pH7.2
Storage Instructions	Store at -20°C for one year. For short term storage and frequent use, store at 4°C for up to one month. Avoid repeated freeze-thaw cycles.
Host	Rabbit
Uniprot ID	Q9Y5Y6

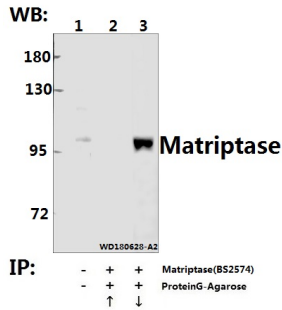
### Technical Details

Immunogen	Synthetic peptide, corresponding to the N-terminal of Human Matriptase.
Isotype	IgG
Form	Liquid
Concentration	1 mg/ml
Purification	The antibody was affinity-purified from rabbit antiserum by affinity-chromatography using epitope-specific immunogen and the purity is > 95% (by SDS-PAGE).
Suggested Dilutions	WB: 1:500-1:1000 IHC/IF: 1:50-1:200 IP: 1:10-1:100

## Anti-Matriptase (K21) ST14 Antibody (A02614) Images



Western blot (WB) analysis of Matriptase (K21) pAb at 1:500 dilution Lane1:C6 whole cell lysate(40ug) Lane2:CT26 whole cell lysate(40ug) Lane3:HCT116 whole cell lysate(40ug) Lane4:PC3 whole cell lysate(40ug)



Immunoprecipitation of HEK293T cell lysate using Matriptase (K21) pAb (Sepharose Bead Conjugate) #BD0048(lane 2 and lane 3) .Lane 1 is 30% input. The western blot was probed using Matriptase (K21) #BS2574. "↑" supernatant; "↓" (deposition)

## Submit a product review to Biocompare.com

Submit a review of this product to Biocompare.com to receive a \$20 Amazon.com giftcard! Your reviews help your fellow scientists make the right decisions. Thank you for your contribution.



### Anti-Matriptase (K21) ST14 Antibody

For Research Use Only. Not for use in diagnostic procedures.