

Anti-APC2 Antibody

Catalog Number: A02624

About APC2

Cell cycle regulated protein ubiquitination and degradation within subcellular domains is thought to be essential for the normal progression of mitosis. APC2 is a highly conserved component of the anaphase promoting complex/cyclosome (APC/C), a cell cycle-regulated E3 ubiquitin ligase that controls progression through mitosis and the G1 phase of the cell cycle. APC/C is responsible for degrading anaphase inhibitors, mitotic cyclins, and spindle-associated proteins ensuring that events of mitosis take place in proper sequence. The individual APC/C components mRNA and protein levels are expressed at approximately the same levels in most tissues and cell lines, suggesting that they perform their functions as part of a complex. Like APC11, APC2 contains cullin and RING finger domains that are thought to be important in regulating ubiquitination activity.

Overview

Product Name	Anti-APC2 Antibody
Reactive Species	Human, Mouse
Description	Boster Bio Anti-APC2 Antibody (Catalog # A02624). Tested in ELISA, WB, ICC, IF applications. This antibody reacts with Human, Mouse.
Application	ELISA, IF, ICC, WB
Clonality	Polyclonal
Formulation	APC2 Antibody is supplied in PBS containing 0.02% sodium azide.
Storage Instructions	APC2 antibody can be stored at 4°C for three months and -20°C, stable for up to one year. Avoid repeated freeze-thaw cycles. Antibodies should not be exposed to prolonged high temperatures.
Host	Rabbit
Uniprot ID	O95996

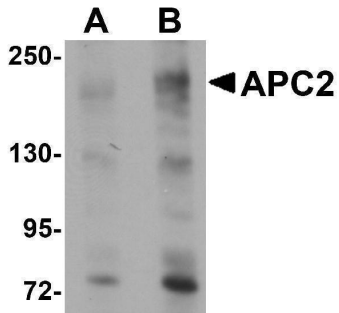
Technical Details

Immunogen	APC2 antibody was raised against an 18 amino acid synthetic peptide near the center of human APC2. The immunogen is located within amino acids 240 - 290 of APC2.
Predicted Reactive Species	Bovine
Isotype	IgG
Form	Liquid
Concentration	1 mg/mL
Purification	APC2 Antibody is affinity chromatography purified via peptide column.

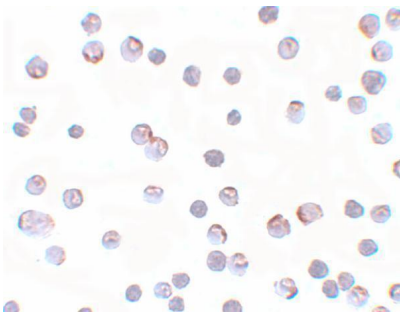
Suggested Dilutions

APC2 antibody can be used for detection of APC2 by Western blot at 1 - 2 ug/mL. Antibody can also be used for immunocytochemistry starting at 5 ug/mL. For immunofluorescence start at 20 ug/mL. Antibody validated: Western Blot in human samples; Immunocytochemistry in human samples and Immunofluorescence in human samples. All other applications and species not yet tested. Optimal dilutions for each application should be determined by the researcher.

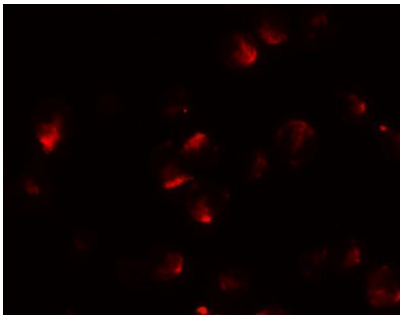
Anti-APC2 Antibody (A02624) Images



Western blot analysis of APC2 in HeLa cell lysate with APC2 antibody at (A) 1 and (B) 2 ug/mL.



Immunocytochemistry of APC2 in HeLa cells with APC2 antibody at 5 ug/mL.



Immunofluorescence of APC2 in HeLa cells with APC2 antibody at 20 ug/mL.

Submit a product review to [Biocompare.com](https://www.biocompare.com)

Submit a review of this product to [Biocompare.com](https://www.biocompare.com) to receive a \$20 Amazon.com giftcard! Your reviews help your fellow scientists make the right decisions. Thank you for your contribution.



Anti-APC2 Antibody

For Research Use Only. Not for use in diagnostic procedures.