

## Anti-Retinal guanylyl cyclase 1 GUCY2D Antibody

Catalog Number: A02625

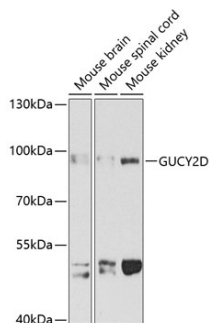
### Overview

Product Name	Anti-Retinal guanylyl cyclase 1 GUCY2D Antibody
Reactive Species	Human, Mouse, Rat
Description	Boster Bio Anti-Retinal guanylyl cyclase 1 GUCY2D Antibody catalog # A02625. Tested in WB applications. This antibody reacts with Human, Mouse, Rat.
Application	WB
Clonality	Polyclonal
Formulation	Rabbit IgG, 1mg/ml in PBS with 0.02% sodium azide, 50% glycerol, pH7.2
Storage Instructions	Store at -20°C for one year. For short term storage and frequent use, store at 4°C for up to one month. Avoid repeated freeze-thaw cycles.
Host	Rabbit
Uniprot ID	Q02846

### Technical Details

Immunogen	Recombinant fusion protein of human GUCY2D(NP_000171.1).
Isotype	IgG
Form	Liquid
Concentration	1 mg/ml
Purification	The antibody was affinity-purified from rabbit antiserum by affinity-chromatography using epitope-specific immunogen and the purity is > 95% (by SDS-PAGE).
Suggested Dilutions	WB: 1:200-1:2000

## Anti-Retinal guanylyl cyclase 1 GUCY2D Antibody (A02625) Images



Western blot analysis of extracts of various cell lines, using GUCY2D antibody at 1:1000 dilution. Secondary antibody: HRP Goat Anti-Rabbit IgG at 1:10000 dilution. Lysates/proteins: 25ug per lane. Blocking buffer: 3% nonfat dry milk in TBST. Detection: ECL Basic Kit. Exposure time: 90s.

### Submit a product review to Biocompare.com

Submit a review of this product to Biocompare.com to receive a \$20 Amazon.com giftcard! Your reviews help your fellow scientists make the right decisions. Thank you for your contribution.



Anti-Retinal guanylyl cyclase 1 GUCY2D Antibody

For Research Use Only. Not for use in diagnostic procedures.