

## Anti-Myosin-6 MYO6 Antibody

Catalog Number: A02627

### About MYO6

Myosin VI is a myosin superfamily member with unique and intriguing features that allow it to fill a still-expanding number of cell biological roles. This actin-based motor produces force that acts towards the minus end of actin filaments, which is the opposite direction to all other characterized myosins. In mammalian cells, myosin VI is localized to endocytic vesicles, membrane ruffles, the cytosol and the Golgi complex. Its motor function is essential for several physiological functions of the cell, including normal rates of endocytosis, maintenance of Golgi morphology and protein secretion. Myosin VI regulates epithelial cell migration and plays a role in the maintenance of adhesive cellular contacts within epithelial cell layers. It is highly expressed in ovarian cancers and prostate cancers and its expression level, which is upregulated by DNA damage in a p53-dependent manner, correlates with the potential of the tumor to disseminate. More recently, myosin VI has been found involved in EGFR endocytosis through a clathrin dependent mechanism.

### Overview

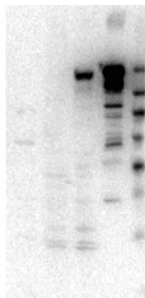
Product Name	Anti-Myosin-6 MYO6 Antibody
Reactive Species	Human, Pig
Description	Boster Bio Anti-Myosin-6 MYO6 Antibody (Catalog # A02627). Tested in WB applications. This antibody reacts with Human, Pig.
Application	WB
Clonality	Polyclonal
Formulation	0.02 M Potassium Phosphate, 0.15 M Sodium Chloride, pH 7.2, 0.01% (w/v) Sodium Azide
Storage Instructions	Store vial at -20°C prior to opening. Aliquot contents and freeze at -20°C or below for extended storage. Avoid cycles of freezing and thawing. Centrifuge product if not completely clear after standing at room temperature. This product is stable for several weeks at 4°C as an undiluted liquid. Dilute only prior to immediate use. Expiration date is one (1) year from date of opening.
Host	Rabbit
Uniprot ID	Q29122

### Technical Details

Immunogen	Anti-Myosin-6 was prepared from whole rabbit serum produced by repeated immunizations with full length myosin-6 construct expressed in SF9 insect cells corresponding to porcine myosin-6 protein.
Predicted Reactive Species	Boar, Bovine, Canine, Golden Hamster
Isotype	Antiserum
Form	Liquid (sterile filtered)

Concentration	25 mg/mL by Refractometry
Purification	Anti-Myosin-6 is directed against the myosin-6 protein. The product was prepared from monospecific antiserum by delipidation and defibrination. A BLAST analysis was used to suggest reactivity with 94% human Myosin VI. Cross-reactivity with myosin6 from other sources have not been determined.
Suggested Dilutions	<p>Dilute the sample so that the expected range of concentrations fall within the detection range of this kit.</p> <p>If the expected range of concentration is unknown, a pilot test should be conducted to decide the optimal dilution ratio for your samples.</p> <p>Some PubMed article(s) citing the expression level of this target are as follows:</p> <p>Boster Bio's internal QC testing used:</p> <p>ELISA: 1:10,000</p> <p>WB: 1:1000</p>

## Anti-Myosin-6 MYO6 Antibody (A02627) Images



Western blot analysis of Myosin-6 expression in SF9 cell lysates of truncated smooth myosin (lane 1), Jurkat whole cell lysates (lane 2), LnCap whole cell lysates (lane 3) and recombinant myosin-6 protein (lane 4). Myosin-6 at 150KD was detected using rabbit anti-Myosin-6 not purified polyclonal antibody (Catalog # A02627) at 1:1000. The blot was developed using chemiluminescence (ECL) method (Catalog # EK1002).

## Submit a product review to Biocompare.com

Submit a review of this product to Biocompare.com to receive a \$20 Amazon.com giftcard! Your reviews help your fellow scientists make the right decisions. Thank you for your contribution.



Anti-Myosin-6 MYO6 Antibody