

## Anti-Caspase-6/CASP6 Antibody Picoband™

Catalog Number: A02631

### About CASP6

Caspase 6 is an enzyme that in humans is encoded by the CASP6 gene. This gene encodes a protein that is a member of the cysteine-aspartic acid protease (caspase) family. Using radiation hybrid mapping, the CASP6 gene is localized to human chromosome 4q25-q26. It functions as a downstream enzyme in the caspase activation cascade. And CASP6 can cleave lamin A to its signature apoptotic fragment.

### Overview

Product Name	Anti-Caspase-6/CASP6 Antibody Picoband™
Reactive Species	Human, Mouse, Rat
Description	Boster Bio Anti-Caspase-6/CASP6 Antibody Picoband™ catalog # A02631. Tested in WB applications. This antibody reacts with Human, Mouse, Rat.
Application	WB
Clonality	Polyclonal
Formulation	Each vial contains 4 mg Trehalose, 0.9 mg NaCl and 0.2 mg Na <sub>2</sub> HPO <sub>4</sub> .
Storage Instructions	Store at -20°C for one year from date of receipt. After reconstitution, at 4°C for one month. It can also be aliquotted and stored frozen at -20°C for six months. Avoid repeated freeze-thaw cycles.
Host	Rabbit
Uniprot ID	P55212

### Technical Details

Immunogen	E. coli-derived human Caspase-6 recombinant protein (Position: A194-N293). Human Caspase-6 shares 95.9% and 93.9% amino acid (aa) sequence identity with mouse and rat Caspase-6, respectively.
Recommended Detection Systems	Boster recommends Enhanced Chemiluminescent Kit with anti-Rabbit IgG (EK1002) for Western blot.
Cross Reactivity	No cross-reactivity with other proteins.
Isotype	Rabbit IgG
Form	Lyophilized
Concentration	Adding 0.2 ml of distilled water will yield a concentration of 500 ug/ml.
Purification	Immunogen affinity purified.

**Suggested Dilutions**

Dilute the sample so that the expected range of concentrations fall within the detection range of this kit.

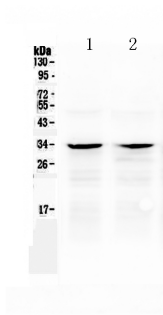
If the expected range of concentration is unknown, a pilot test should be conducted to decide the optimal dilution ratio for your samples.

Some PubMed article(s) citing the expression level of this target are as follows:

Boster Bio's internal QC testing used:

Western blot, 0.1-0.5ug/ml, Mouse, Rat, Human

## Anti-Caspase-6/CASP6 Antibody Picoband™ (A02631) Images



### Figure 1. Western blot analysis of Caspase-6 using anti-Caspase-6 antibody (A02631).

Electrophoresis was performed on a 5-20% SDS-PAGE gel at 70V (Stacking gel) / 90V (Resolving gel) for 2-3 hours. The sample well of each lane was loaded with 50ug of sample under reducing conditions.

Lane 1: rat kidney tissue lysate,

Lane 2: mouse kidney tissue lysate.

After Electrophoresis, proteins were transferred to a Nitrocellulose membrane at 150mA for 50-90 minutes. Blocked the membrane with 5% Non-fat Milk/ TBS for 1.5 hour at RT. The membrane was incubated with rabbit anti-Caspase-6 antigen affinity purified polyclonal antibody (Catalog # A02631) at 0.5 ug/mL overnight at 4°C, then washed with TBS-0.1%Tween 3 times with 5 minutes each and probed with a goat anti-rabbit IgG-HRP secondary antibody at a dilution of 1:10000 for 1.5 hour at RT. The signal is developed using an Enhanced Chemiluminescent detection (ECL) kit (Catalog # EK1002) with Tanon 5200 system. A specific band was detected for Caspase-6 at approximately 33KD. The expected band size for Caspase-6 is at 33KD.

## Submit a product review to Biocompare.com

Submit a review of this product to Biocompare.com to receive a \$20 Amazon.com giftcard! Your reviews help your fellow scientists make the right decisions. Thank you for your contribution.



Anti-Caspase-6/CASP6 Antibody™