

## Anti-Caspase-6 CASP6 Antibody

Catalog Number: A02631-1

### About CASP6

Caspases are a family of cysteine proteases that can be divided into the apoptotic and inflammatory caspase subfamilies. Unlike the apoptotic caspases, members of the inflammatory subfamily are generally not involved in cell death but are associated with the immune response to microbial pathogens. The apoptotic subfamily can be further divided into initiator caspases, which are activated in response to death signals, and executioner caspases, which are activated by the initiator caspases and are responsible for cleavage of cellular substrates that ultimately lead to cell death. Caspase-6 is an executioner caspase that was identified based on its homology with human caspases 2 and 3 as well as the *C. elegans* cell death protein CED-3. It possesses two isoforms, of which only the longer form possesses protease activity. Caspase-6 is highly expressed in adult brain and may play a role in several neuronal pathologies.

### Overview

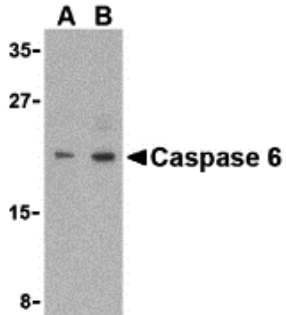
Product Name	Anti-Caspase-6 CASP6 Antibody
Reactive Species	Human
Description	Boster Bio Anti-Caspase-6 CASP6 Antibody (Catalog # A02631-1). Tested in ELISA, WB, ICC, IF applications. This antibody reacts with Human.
Application	ELISA, IF, ICC, WB
Clonality	Polyclonal
Formulation	Caspase-6 Antibody is supplied in PBS containing 0.02% sodium azide.
Storage Instructions	Caspase-6 antibody can be stored at 4°C for three months and -20°C, stable for up to one year. Avoid repeated freeze-thaw cycles. Antibodies should not be exposed to prolonged high temperatures.
Host	Rabbit
Uniprot ID	P55212

### Technical Details

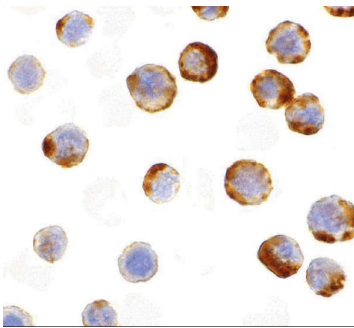
Immunogen	Caspase-6 antibody was raised against a 15 amino acid synthetic peptide from near the center of human Caspase-6. The immunogen is located within amino acids 160 - 210 of Caspase-6.
Predicted Reactive Species	Bovine
Cross Reactivity	Depending on cell lines or tissues used, either full-length or other cleavage products may be observed.
Isotype	IgG
Form	Liquid

Concentration	1 mg/mL
Purification	Caspase-6 Antibody is immunoaffinity purified .
Suggested Dilutions	<p>Casp-6 antibody can be used for the detection of Caspase-6 by Western blot at 1 and 2 ug/mL. Antibody can also be used for immunocytochemistry starting at 1 ug/mL. For immunofluorescence start at 10 ug/mL.</p> <p>Antibody validated: Western Blot in human samples; Immunocytochemistry in human samples and Immunofluorescence in human samples. All other applications and species not yet tested. Optimal dilutions for each application should be determined by the researcher.</p>

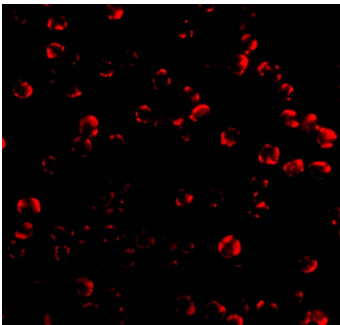
## Anti-Caspase-6 CASP6 Antibody (A02631-1) Images



Western blot analysis of Caspase-6 in MCF7 cell lysate with Caspase-6 antibody (IN) at (A) 1 and (B) 2 ug/mL.



Immunocytochemistry of caspase-6 in MCF7 with caspase-6 antibody at 1 ug/mL.



Immunofluorescence of Caspase 6 in MCF7 cells with Caspase 6 antibody at 10 ug/mL.

### Submit a product review to [Biocompare.com](https://www.biocompare.com)

Submit a review of this product to [Biocompare.com](https://www.biocompare.com) to receive a \$20 Amazon.com giftcard! Your reviews help your fellow scientists make the right decisions. Thank you for your contribution.



Anti-Caspase-6 CASP6 Antibody

For Research Use Only. Not for use in diagnostic procedures.