

Anti-Caspase-6 (phospho-S257) CASP6 Antibody

Catalog Number: A02631S257

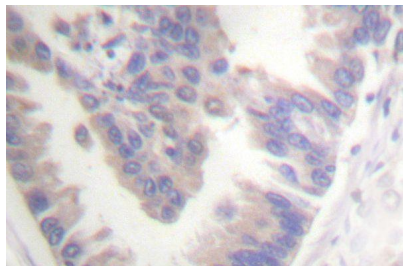
Overview

Product Name	Anti-Caspase-6 (phospho-S257) CASP6 Antibody
Reactive Species	Human, Mouse, Rat
Description	Boster Bio Anti-Caspase-6 (phospho-S257) CASP6 Antibody catalog # A02631S257. Tested in IHC applications. This antibody reacts with Human, Mouse, Rat.
Application	IHC
Clonality	Polyclonal
Formulation	Rabbit IgG, 1mg/ml in PBS with 0.02% sodium azide, 50% glycerol, pH7.2
Storage Instructions	Store at -20°C for one year. For short term storage and frequent use, store at 4°C for up to one month. Avoid repeated freeze-thaw cycles.
Host	Rabbit
Uniprot ID	P55212

Technical Details

Immunogen	Synthetic phosphopeptide derived from human Caspase-6 around the phosphorylation site of Serine 257.
Isotype	Antiserum
Form	Liquid
Concentration	25 mg/mL by Refractometry
Purification	The antibody was affinity-purified from rabbit antiserum by affinity-chromatography using epitope-specific immunogen and the purity is > 95% (by SDS-PAGE).
Suggested Dilutions	IHC: 1:50-1:200

Anti-Caspase-6 (phospho-S257) CASP6 Antibody (A02631S257) Images



Immunohistochemistry (IHC) analyzes of p-Caspase 6 (S257) pAb in paraffin-embedded human colon carcinoma tissue.

Submit a product review to [Biocompare.com](https://www.biocompare.com)

Submit a review of this product to [Biocompare.com](https://www.biocompare.com) to receive a \$20 Amazon.com giftcard! Your reviews help your fellow scientists make the right decisions. Thank you for your contribution.



Anti-Caspase-6 (phospho-S257) CASP6 Antibody

For Research Use Only. Not for use in diagnostic procedures.