

## Anti-IFITM1 Antibody

Catalog Number: A02633

### About IFITM1

IFITM1 (Interferon inducible transmembrane protein 1) is a member of the IFN-inducible transmembrane protein family. It is an essential mediator of interferon-gamma-induced antiproliferation and plays a role in the control of cell growth. IFITM1 is upregulated in several tumor types and may be useful as a tumor biomarker. Both mouse IFITM1 and IFITM3 are expressed on the cell surfaces of primordial germ cells in a developmentally-regulated manner. IFITM1 activity is required for primordial germ cell transit, and IFITM1 acts as a repulsive molecule by repelling non-IFITM1-expressing primordial germ cells from the mesoderm into the endoderm.

### Overview

|                      |   |
|----------------------|---|
| Product Name         | Anti-IFITM1 Antibody  |
| Reactive Species     | Human, Mouse, Rat   |
| Description          | Boster Bio Anti-IFITM1 Antibody (Catalog # A02633). Tested in ELISA, WB, ICC, IF applications. This antibody reacts with Human, Mouse, Rat.   |
| Application          | ELISA, IF, ICC, WB  |
| Clonality            | Polyclonal  |
| Formulation          | IFITM1 Antibody is supplied in PBS containing 0.02% sodium azide.   |
| Storage Instructions | IFITM1 antibody can be stored at 4°C for three months and -20°C, stable for up to one year. Avoid repeated freeze-thaw cycles. Antibodies should not be exposed to prolonged high temperatures. |
| Host                 | Rabbit  |
| Uniprot ID           | P13164  |

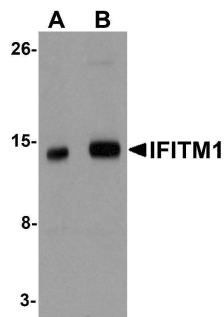
### Technical Details

|                            |  |
|----------------------------|--|
| Immunogen                  | IFITM1 antibody was raised against a 16 amino acid synthetic peptide near the center of human IFITM1. The immunogen is located within amino acids 40 - 90 of IFITM1.                           |
| Predicted Reactive Species | Bovine   |
| Isotype                    | IgG  |
| Form                       | Liquid   |
| Concentration              | 1 mg/mL  |
| Purification               | IFITM1 Antibody is affinity chromatography purified via peptide column.  |
| Suggested Dilutions        | IFITM1 antibody can be used for detection of IFITM1 by Western blot at 1 - 2 ug/mL. Antibody can also be used for immunocytochemistry starting at 20 ug/mL. For immunofluorescence start at 20 |

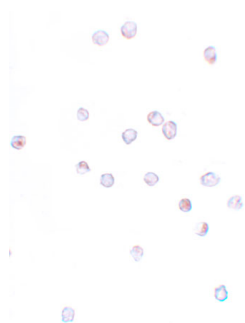
ug/mL.

Antibody validated: Western Blot in mouse samples; Immunocytochemistry in human samples and Immunofluorescence in human samples. All other applications and species not yet tested. Optimal dilutions for each application should be determined by the researcher.

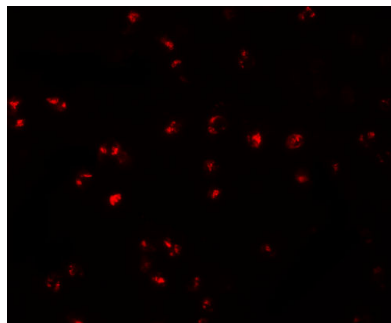
## Anti-IFITM1 Antibody (A02633) Images



Western blot analysis of IFITM1 in 3T3 cell lysate with IFITM1 antibody at (A) 1 and (B) 2 ug/mL.



Immunocytochemistry of IFITM1 in Jurkat cells with IFITM1 antibody at 20 ug/mL.



Immunofluorescence of IFITM1 in Jurkat cells with IFITM1 antibody at 20 ug/mL.

### Submit a product review to [Biocompare.com](https://www.biocompare.com)

Submit a review of this product to [Biocompare.com](https://www.biocompare.com) to receive a \$20 Amazon.com giftcard! Your reviews help your fellow scientists make the right decisions. Thank you for your contribution.



Anti-IFITM1 Antibody

For Research Use Only. Not for use in diagnostic procedures.