

## Anti-IFITM1 Antibody Picoband®

Catalog Number: A02633-2

### About IFITM1

Interferon-induced Transmembrane Protein 1(IFITM1), also called Interferon-induced Protein 17(IFI17). IFITM1 activity is required for primordial germ cells(PGCs) transit from the mesoderm into the endoderm, and that it appears to act via a repulsive mechanism, such that PGCs avoid Ifitm1-expressing tissues. It is mapped to Chr.11 and belongs to the family of interferon-induced transmembrane proteins(Ifitm/mil/fragilis), which encodes cell surface proteins that may modulate cell adhesion and influence cell differentiation. Interferon-inducible membrane proteins of approximately 17 kDa have been suggested to play a role in the antiproliferative activity of interferons based on their pattern of induction in interferon-sensitive and -resistant cell lines and the ability of a membrane fraction enriched in 17-kDa proteins to inhibit cell growth.

### Overview

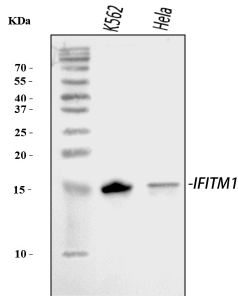
Product Name	Anti-IFITM1 Antibody Picoband®
Reactive Species	Human
Description	Boster Bio Anti-IFITM1 Antibody Picoband® catalog # A02633-2. Tested in ELISA, WB applications. This antibody reacts with Human. The brand Picoband indicates this is a premium antibody that guarantees superior quality, high affinity, and strong signals with minimal background in Western blot applications. Only our best-performing antibodies are designated as Picoband, ensuring unmatched performance.
Application	ELISA, WB
Clonality	Polyclonal
Formulation	Each vial contains 4 mg Trehalose, 0.9 mg NaCl, 0.2 mg Na <sub>2</sub> HPO <sub>4</sub> .
Storage Instructions	At -20°C for one year from date of receipt. After reconstitution, at 4°C for one month. It can also be aliquotted and stored frozen at -20°C for six months. Avoid repeated freezing and thawing.
Host	Rabbit
Uniprot ID	P13164

### Technical Details

Immunogen	E.coli-derived human IFITM1 recombinant protein (Position: M1-Y125).
Recommended Detection Systems	Boster recommends Enhanced Chemiluminescent Kit with anti-Rabbit IgG (EK1002) for Western blot.
Cross Reactivity	No cross-reactivity with other proteins.
Isotype	Rabbit IgG
Form	Lyophilized

Concentration	Adding 0.2 ml of distilled water will yield a concentration of 500 ug/ml.
Purification	Immunogen affinity purified.
Suggested Dilutions	Western blot, 0.25-0.5 ug/ml, Human ELISA, 0.1-0.5 ug/ml, -

## Anti-IFITM1 Antibody Picoband® (A02633-2) Images



Western blot analysis of IFITM1 using anti-IFITM1 antibody (A02633-2). Electrophoresis was performed on a 5-20% SDS-PAGE gel at 70V (Stacking gel) / 90V (Resolving gel) for 2-3 hours. The sample well of each lane was loaded with 30 ug of sample under reducing conditions. Lane 1: human K562 whole cell lysates, Lane 2: human HeLa whole cell lysates. After electrophoresis, proteins were transferred to a nitrocellulose membrane at 150 mA for 50-90 minutes. Blocked the membrane with 5% non-fat milk/TBS for 1.5 hour at RT. The membrane was incubated with rabbit anti-IFITM1 antigen affinity purified polyclonal antibody (Catalog # A02633-2) at 0.5 ug/mL overnight at 4°C, then washed with TBS-0.1%Tween 3 times with 5 minutes each and probed with a goat anti-rabbit IgG-HRP secondary antibody at a dilution of 1:5000 for 1.5 hour at RT. The signal is developed using an Enhanced Chemiluminescent detection (ECL) kit (Catalog # EK1002) with Tanon 5200 system. A specific band was detected for IFITM1 at approximately 15 kDa. The expected band size for IFITM1 is at 15 kDa.

### Submit a product review to Biocompare.com

Submit a review of this product to Biocompare.com to receive a \$20 Amazon.com giftcard! Your reviews help your fellow scientists make the right decisions. Thank you for your contribution.



### Anti-IFITM1 Antibody

For Research Use Only. Not for use in diagnostic procedures.