

## Anti-Gastric inhibitory polypeptide GIP Antibody

Catalog Number: A02647

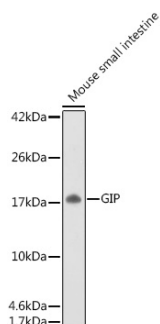
### Overview

Product Name	Anti-Gastric inhibitory polypeptide GIP Antibody
Reactive Species	Human, Mouse, Rat
Description	Boster Bio Anti-Gastric inhibitory polypeptide GIP Antibody catalog # A02647. Tested in WB,IHC-P applications. This antibody reacts with Human,Mouse,Rat.
Application	IHC-P, WB
Clonality	Polyclonal
Formulation	Rabbit IgG, 1mg/ml in PBS with 0.02% sodium azide, 50% glycerol, pH7.2
Storage Instructions	Store at -20°C for one year. For short term storage and frequent use, store at 4°C for up to one month. Avoid repeated freeze-thaw cycles.
Host	Rabbit
Uniprot ID	P09681

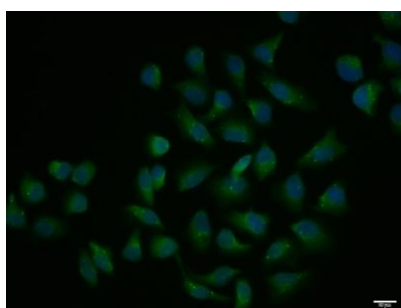
### Technical Details

Immunogen	Recombinant fusion protein containing a sequence corresponding to amino acids 22-153 of human GIP (NP_004114.1).
Isotype	IgG
Form	Liquid
Concentration	1 mg/ml
Purification	The antibody was affinity-purified from rabbit antiserum by affinity-chromatography using epitope-specific immunogen and the purity is > 95% (by SDS-PAGE).
Suggested Dilutions	WB: 1:500-1:2000 ELISA: 1:5000-1:10000 IHC: 1:100-1:500  IF: 1:100-1:500 ICC: 1:100-1:500

## Anti-Gastric inhibitory polypeptide GIP Antibody (A02647) Images



Western blot analysis of extracts of Mouse small intestine, using GIP antibody at 1:500 dilution.



Immunohistochemistry analysis of paraffin-embedded mouse intestine using GIP pAb at dilution of 1:50 (40x lens).

### Submit a product review to Biocompare.com

Submit a review of this product to Biocompare.com to receive a \$20 Amazon.com giftcard! Your reviews help your fellow scientists make the right decisions. Thank you for your contribution.



Anti-Gastric inhibitory polypeptide GIP Antibody

For Research Use Only. Not for use in diagnostic procedures.