

Anti-Serine racemase/SRR Antibody Picoband®

Catalog Number: A02660-2

About SRR

SRR(serine racemase) is a 37 kDa protein and belongs to the serine/threonine dehydratase family. It plays a role in neuronal activity and a potential biological role in the regulation of N-methyl-D-aspartate (NMDA) receptor activity in these peripheral organs as well. SRR catalyzes the racemization between l- and d-serine.

Overview

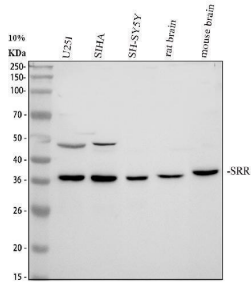
| | |
|----------------------|---|
| Product Name | Anti-Serine racemase/SRR Antibody Picoband® |
| Reactive Species | Human, Mouse, Rat |
| Description | Boster Bio Anti-Serine racemase/SRR Antibody Picoband® catalog # A02660-2. Tested in ELISA, Flow Cytometry, IP, IF, IHC, ICC, WB applications. This antibody reacts with Human, Mouse, Rat. The brand Picoband indicates this is a premium antibody that guarantees superior quality, high affinity, and strong signals with minimal background in Western blot applications. Only our best-performing antibodies are designated as Picoband, ensuring unmatched performance. |
| Application | ELISA, Flow Cytometry, IP, IF, IHC, ICC, WB |
| Clonality | Polyclonal |
| Formulation | Each vial contains 4 mg Trehalose, 0.9 mg NaCl, 0.2 mg Na ₂ HPO ₄ . |
| Storage Instructions | At -20°C for one year from date of receipt. After reconstitution, at 4°C for one month. It can also be aliquotted and stored frozen at -20°C for six months. Avoid repeated freezing and thawing. |
| Host | Rabbit |
| Uniprot ID | Q9GZT4 |

Technical Details

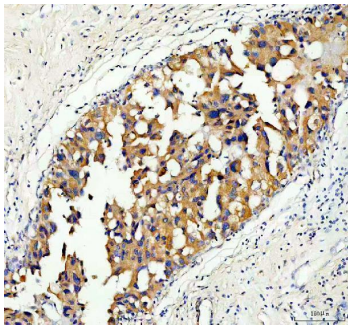
| | |
|---------------------|--|
| Immunogen | E.coli-derived human Serine racemase/SRR recombinant protein (Position: A3-E283). |
| Cross Reactivity | No cross-reactivity with other proteins. |
| Isotype | Rabbit IgG |
| Form | Lyophilized |
| Concentration | Adding 0.2 ml of distilled water will yield a concentration of 500 µg/ml. |
| Purification | Immunogen affinity purified. |
| Suggested Dilutions | Western blot, 0.25-0.5 µg/ml, Human, Mouse, Rat Immunohistochemistry(Paraffin-embedded Section), 2-5 µg/ml, Human |

| | |
|--|---|
| | Immunocytochemistry/Immunofluorescence, 5 ug/ml, Human Immunoprecipitation, 0.5-2 ug/ml, Human Flow Cytometry (Fixed), 1-3 ug/1x10 ⁶ cells, Human ELISA, 0.1-0.5 ug/ml, - |
|--|---|

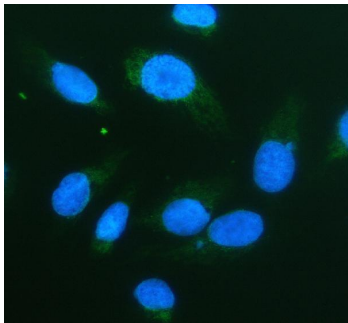
Anti-Serine racemase/SRR Antibody Picoband® (A02660-2) Images



Western blot analysis of Serine racemase/SRR using anti-Serine racemase/SRR antibody (A02660-2). Electrophoresis was performed on a 10% SDS-PAGE gel at 80V (Stacking gel) / 120V (Resolving gel) for 2-3 hours. The sample well of each lane was loaded with 30 ug of sample under reducing conditions. Lane 1: human U251 whole cell lysates, Lane 2: human SHa whole cell lysates, Lane 3: human SH-SY5Y whole cell lysates, Lane 4: rat brain tissue lysates, Lane 5: mouse brain tissue lysates. After electrophoresis, proteins were transferred to a nitrocellulose membrane at 150 mA for 50-90 minutes. Blocked the membrane with 5% non-fat milk/TBS for 1.5 hour at RT. The membrane was incubated with rabbit anti-Serine racemase/SRR antigen affinity purified polyclonal antibody (Catalog # A02660-2) at 0.5 ug/mL overnight at 4°C, then washed with TBS-0.1%Tween 3 times with 5 minutes each and probed with a goat anti-rabbit IgG-HRP secondary antibody at a dilution of 1:5000 for 1.5 hour at RT. The signal is developed using an ECL Plus Western Blotting Substrate (Catalog # AR1196-200) with Tanon 5200 system. A specific band was detected for Serine racemase/SRR at approximately 37 kDa. The expected band size for Serine racemase/SRR is at 37 kDa.

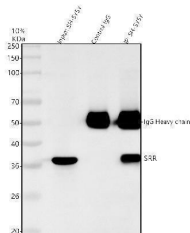


IHC analysis of Serine racemase/SRR using anti-Serine racemase/SRR antibody (A02660-2). Serine racemase/SRR was detected in a paraffin-embedded section of human breast cancer tissue. Heat mediated antigen retrieval was performed in EDTA buffer (pH 8.0, epitope retrieval solution). The tissue section was blocked with 10% goat serum. The tissue section was then incubated with 2 ug/ml rabbit anti-Serine racemase/SRR Antibody (A02660-2) overnight at 4°C. Peroxidase Conjugated Goat Anti-rabbit IgG was used as secondary antibody and incubated for 30 minutes at 37°C. The tissue section was developed using HRP Conjugated Rabbit IgG Super Vision Assay Kit (Catalog # SV0002) with DAB as the chromogen.

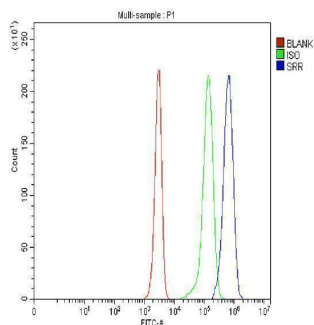


IF analysis of Serine racemase/SRR using anti-Serine racemase/SRR antibody (A02660-2). Serine racemase/SRR was detected in an immunocytochemical section of U2OS cells. Enzyme antigen retrieval was performed using IHC enzyme antigen retrieval reagent (AR0022) for 15 mins. The cells were blocked with 10% goat serum. And then incubated with 5 ug/mL rabbit anti-Serine racemase/SRR Antibody (A02660-2) overnight at 4°C. DyLight®488 Conjugated Goat Anti-Rabbit IgG (BA1127) was used as secondary antibody at 1:500 dilution and incubated for 30 minutes at 37°C. The section was counterstained with DAPI. Visualize using a fluorescence microscope and filter sets appropriate for the label used.

Immunoprecipitating Serine racemase/SRR in SH-SY5Y whole



cell lysate. Western blot analysis of Serine racemase/SRR using anti-Serine racemase/SRR antibody (A02660-2). Lane 1: SH-SY5Y whole cell lysates (30ug); Lane 2: Rabbit control IgG instead of anti-Serine racemase/SRR antibody in SH-SY5Y whole cell lysate; Lane 3: anti-Serine racemase/SRR antibody (2ug) + SH-SY5Y whole cell lysate (500ug). After electrophoresis, proteins were transferred to a membrane. Then the membrane was incubated with rabbit anti-Serine racemase/SRR antigen affinity purified polyclonal antibody (A02660-2) at a dilution of 0.5 ug/mL and probed with a goat anti-rabbit IgG-HRP secondary antibody (Catalog # BA1054). The signal is developed using ECL Plus Western Blotting Substrate (Catalog # AR1196-200). A specific band was detected for Serine racemase/SRR at approximately 37 kDa. The expected band size for Serine racemase/SRR is at 37 kDa.



Flow Cytometry analysis of Jurkat cells using anti-Serine racemase/SRR antibody (A02660-2). Overlay histogram showing Jurkat cells stained with A02660-2 (Blue line). To facilitate intracellular staining, cells were fixed with 4% paraformaldehyde and permeabilized with permeabilization buffer. The cells were blocked with 10% normal goat serum. And then incubated with rabbit anti-Serine racemase/SRR Antibody (A02660-2, 1 ug/1x10⁶ cells) for 30 min at 20°C. DyLight®488 conjugated goat anti-rabbit IgG (BA1127, 5-10 ug/1x10⁶ cells) was used as secondary antibody for 30 minutes at 20°C. Isotype control antibody (Green line) was rabbit IgG (1 ug/1x10⁶) used under the same conditions. Unlabelled sample without incubation with primary antibody and secondary antibody (Red line) was used as a blank control.

Submit a product review to Biocompare.com

Submit a review of this product to Biocompare.com to receive a \$20 Amazon.com giftcard! Your reviews help your fellow scientists make the right decisions. Thank you for your contribution.



Anti-Serine racemase/SRR Antibody

For Research Use Only. Not for use in diagnostic procedures.