

Anti-BRIT1/MCPH1 Antibody Picoband®

Catalog Number: A02666-2

About MCPH1

This gene encodes a DNA damage response protein. The encoded protein may play a role in G2/M checkpoint arrest via maintenance of inhibitory phosphorylation of cyclin-dependent kinase 1. Mutations in this gene have been associated with primary autosomal recessive microcephaly 1 and premature chromosome condensation syndrome. Alternatively spliced transcript variants have been described.

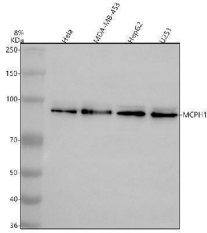
Overview

| | |
|----------------------|--|
| Product Name | Anti-BRIT1/MCPH1 Antibody Picoband® |
| Reactive Species | Human, Mouse |
| Description | Boster Bio Anti-BRIT1/MCPH1 Antibody Picoband® catalog # A02666-2. Tested in WB, ICC/IF, Flow Cytometry, ELISA applications. This antibody reacts with Human, Mouse. The brand Picoband indicates this is a premium antibody that guarantees superior quality, high affinity, and strong signals with minimal background in Western blot applications. Only our best-performing antibodies are designated as Picoband, ensuring unmatched performance. |
| Application | ELISA, Flow Cytometry, IF, ICC, WB |
| Clonality | Polyclonal |
| Formulation | Each vial contains 4 mg Trehalose, 0.9 mg NaCl, 0.2 mg Na ₂ HPO ₄ . |
| Storage Instructions | At -20°C for one year from date of receipt. After reconstitution, at 4°C for one month. It can also be aliquotted and stored frozen at -20°C for six months. Avoid repeated freezing and thawing. |
| Host | Rabbit |
| Uniprot ID | Q8NEM0 |

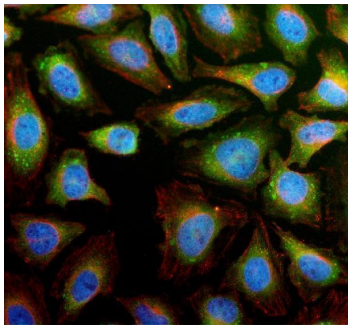
Technical Details

| | |
|---------------------|---|
| Immunogen | E.coli-derived human BRIT1/MCPH1 recombinant protein (Position: Q64-Q835). |
| Form | Lyophilized |
| Concentration | Adding 0.2 ml of distilled water will yield a concentration of 500 ug/ml. |
| Purification | Immunogen affinity purified. |
| Suggested Dilutions | Western blot, 0.25-0.5 ug/ml, Human, Mouse Immunocytochemistry/Immunofluorescence, 5 ug/ml, Human Flow Cytometry (Fixed), 1-3 ug/1x10 ⁶ cells, Human ELISA, 0.1-0.5 ug/ml |

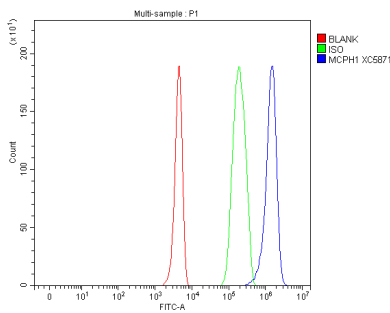
Anti-BRIT1/MCPH1 Antibody Picoband® (A02666-2) Images



Western blot analysis of BRIT1/MCPH1 using anti-BRIT1/MCPH1 antibody (A02666-2). Electrophoresis was performed on a 8% SDS-PAGE gel at 80V (Stacking gel) / 120V (Resolving gel) for 2 hours. The sample well of each lane was loaded with 30 ug of sample under reducing conditions. Lane 1: human Hela whole cell lysates, Lane 2: human MDA-MB-453 whole cell lysates, Lane 3: human HepG2 whole cell lysates, Lane 4: human U251 whole cell lysates. After electrophoresis, proteins were transferred to a nitrocellulose membrane at 150 mA for 50-90 minutes. Blocked the membrane with 5% non-fat milk/TBS for 1.5 hour at RT. The membrane was incubated with rabbit anti-BRIT1/MCPH1 antigen affinity purified polyclonal antibody (A02666-2) at 0.5 ug/mL overnight at 4°C, then washed with TBS-0.1%Tween 3 times with 5 minutes each and probed with a goat anti-rabbit IgG-HRP secondary antibody at a dilution of 1:5000 for 1.5 hour at RT. The signal is developed using an ECL Plus Western Blotting Substrate (Catalog # AR1196-200) with Tanon 5200 system. A specific band was detected for BRIT1/MCPH1 at approximately 93 kDa. The expected band size for BRIT1/MCPH1 is at 93 kDa.



IF analysis of BRIT1/MCPH1 using anti-BRIT1/MCPH1 antibody (A02666-2) and anti-Beta Tubulin antibody (M01857-3). BRIT1/MCPH1 was detected in an immunocytochemical section of Hela cells. Enzyme antigen retrieval was performed using IHC enzyme antigen retrieval reagent (AR0022) for 15 mins. The cells were blocked with 10% goat serum. And then incubated with 5 ug/mL rabbit anti-BRIT1/MCPH1 Antibody (A02666-2) and mouse anti-Beta Tubulin antibody (M01857-3) overnight at 4°C. DyLight®488 Conjugated Goat Anti-Rabbit IgG (BA1127) and Cy3 Conjugated Goat Anti-Mouse IgG (BA1031) were used as secondary antibody at 1:500 dilution and incubated for 30 minutes at 37°C. The section was counterstained with DAPI. Visualize using a fluorescence microscope and filter sets appropriate for the label used.



Flow Cytometry analysis of 293T cells using anti-BRIT1/MCPH1 antibody (A02666-2). Overlay histogram showing 293T cells stained with A02666-2 (Blue line). To facilitate intracellular staining, cells were fixed with 4% paraformaldehyde and permeabilized with permeabilization buffer. The cells were blocked with 10% normal goat serum. And then incubated with rabbit anti-BRIT1/MCPH1 Antibody (A02666-2, 1 ug/1x10⁶ cells) for 30 min at 20°C. DyLight®488 conjugated goat anti-rabbit IgG (BA1127, 5-10 ug/1x10⁶ cells) was used as secondary antibody for 30 minutes at 20°C. Isotype control antibody (Green line) was rabbit IgG (1 ug/1x10⁶) used under the same conditions. Unlabelled sample without incubation with primary antibody and secondary antibody (Red line) was used as a blank control.

Submit a product review to Biocompare.com

Submit a review of this product to Biocompare.com to receive a \$20 Amazon.com giftcard! Your reviews help your fellow scientists make the right decisions. Thank you for your contribution.



Anti-BRIT1/MCPH1 Antibody

For Research Use Only. Not for use in diagnostic procedures.