

Anti-CIDE-A Antibody

Catalog Number: A02671

About CIDEA

Apoptosis is related to many diseases and induced by a family of cell death receptors. Cell death signals are transduced by DD-, DED-, or CARD-containing molecules and members of the caspase family of proteases. These death signals finally cause the degradation of chromosomal DNA by activated DNase DFF40/CAD, which is chaperoned and inhibited by DFF45/ICAD. DFF45 related proteins CIDE-A and CIDE-B (for cell death-inducing DFF-like effector A and B) were recently identified. CIDE contains a new type of domain termed CIDE-N, which has high homology with the regulatory domains of DFF45/ICAD and DFF40/CAD. Expression of CIDE-A induces DNA fragmentation and activates apoptosis, which is inhibited by DFF45. CIDE-A is expressed in many tissues.

Overview

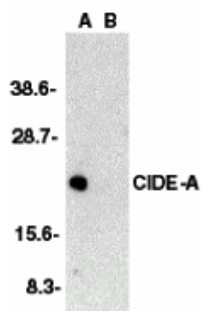
Product Name	Anti-CIDE-A Antibody
Reactive Species	Human
Description	Boster Bio Anti-CIDE-A Antibody (Catalog # A02671). Tested in ELISA, WB, IHC-P, IF applications. This antibody reacts with Human.
Application	ELISA, IF, IHC-P, WB
Clonality	Polyclonal
Formulation	CIDE-A Antibody is supplied in PBS containing 0.02% sodium azide.
Storage Instructions	CIDE-A antibody can be stored at 4°C for three months and -20°C, stable for up to one year. Avoid repeated freeze-thaw cycles. Antibodies should not be exposed to prolonged high temperatures.
Host	Rabbit
Uniprot ID	O60543

Technical Details

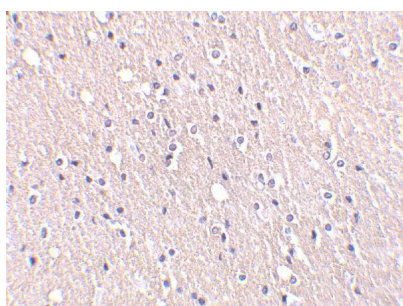
Immunogen	CIDE-A antibody was raised against a 18 amino acid peptide near the carboxy terminus of human CIDE-A. The immunogen is located within the last 50 amino acids of CIDE-A.
Predicted Reactive Species	Bovine, Chicken, Mouse, Rat
Cross Reactivity	It has no cross activity to CIDE-B.
Isotype	IgG
Form	Liquid
Concentration	1 mg/ml

Purification	CIDE-A Antibody is affinity chromatography purified via peptide column.
Suggested Dilutions	<p>CIDE-A antibody can be used for detection of CIDE-A by Western blot at 2 ug/mL. An approximately 23 kDa band can be detected. Antibody can also be used for immunohistochemistry starting at 5 ug/mL. For immunofluorescence start at 20 ug/mL.</p> <p>Antibody validated: Western Blot in human samples; Immunohistochemistry in human samples and Immunofluorescence in human samples. All other applications and species not yet tested. Optimal dilutions for each application should be determined by the researcher.</p>

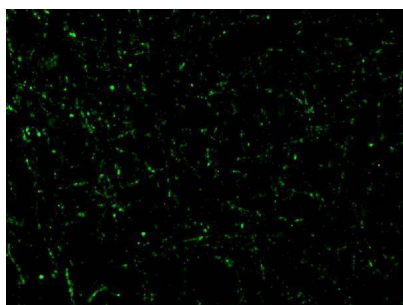
Anti-CIDE-A Antibody (A02671) Images



Western blot analysis of CIDE-A in human brain tissue lysate in the absence (A) or presence (B) of peptide (A02671P) with CIDE-A antibody at 1:2000 dilution.



Immunohistochemistry of CIDE-A in human brain tissue with CIDE-A antibody at 5 ug/mL.



Immunofluorescence of CIDE-A in Human Brain cells with CIDE-A antibody at 20 ug/mL.

Submit a product review to [Biocompare.com](https://www.biocompare.com)

Submit a review of this product to [Biocompare.com](https://www.biocompare.com) to receive a \$20 Amazon.com giftcard! Your reviews help your fellow scientists make the right decisions. Thank you for your contribution.



Anti-CIDE-A Antibody

For Research Use Only. Not for use in diagnostic procedures.