

Anti-GluR1 (Phospho-S845) GRIA1 Antibody

Catalog Number: A02677S845

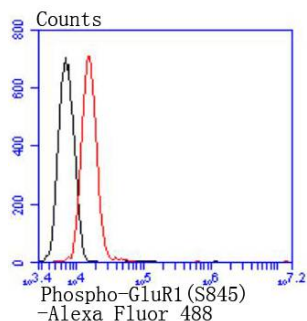
Overview

Product Name	Anti-GluR1 (Phospho-S845) GRIA1 Antibody
Reactive Species	Human, Mouse, Rat
Description	Boster Bio Anti-GluR1 (Phospho-S845) GRIA1 Antibody catalog # A02677S845. Tested in WB, Flow Cytometry applications. This antibody reacts with Human, Mouse, Rat.
Application	Flow Cytometry, WB
Clonality	Polyclonal
Formulation	Rabbit IgG, 1mg/ml in PBS with 0.02% sodium azide, 50% glycerol, pH7.2
Storage Instructions	Store at -20°C for one year. For short term storage and frequent use, store at 4°C for up to one month. Avoid repeated freeze-thaw cycles.
Host	Rabbit
Uniprot ID	P42261

Technical Details

Immunogen	Synthetic phospho-peptide corresponding to residues surrounding Ser845 of human GluR1.
Isotype	IgG
Form	Liquid
Concentration	1 mg/ml
Purification	ProA affinity purified
Suggested Dilutions	WB: 1:500 FC: 1:10-1:50

Anti-GluR1 (Phospho-S845) GRIA1 Antibody (A02677S845) Images



Flow cytometric analysis of N2A cells with Phospho-GluR1(S845) antibody at 1/50 dilution (red) compared with an unlabelled control (cells without incubation with primary antibody; black). Alexa Fluor 488-conjugated goat anti rabbit IgG was used as the secondary antibody.

Submit a product review to Biocompare.com

Submit a review of this product to Biocompare.com to receive a \$20 Amazon.com giftcard! Your reviews help your fellow scientists make the right decisions. Thank you for your contribution.



Anti-GluR1 (Phospho-S845) GRIA1 Antibody

For Research Use Only. Not for use in diagnostic procedures.