

## Anti-GluR1 (phospho-S849) GRIA1 Antibody

Catalog Number: A02677S849

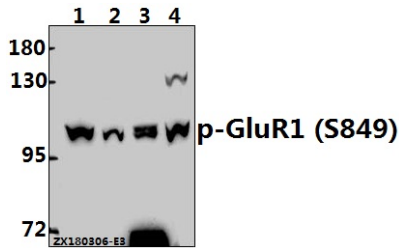
### Overview

Product Name	Anti-GluR1 (phospho-S849) GRIA1 Antibody
Reactive Species	Human, Mouse, Rat
Description	Boster Bio Anti-GluR1 (phospho-S849) GRIA1 Antibody catalog # A02677S849. Tested in WB,IHC applications. This antibody reacts with Human,Mouse,Rat.
Application	IHC, WB
Clonality	Polyclonal
Formulation	Rabbit IgG, 1mg/ml in PBS with 0.02% sodium azide, 50% glycerol, pH7.2
Storage Instructions	Store at -20°C for one year. For short term storage and frequent use, store at 4°C for up to one month. Avoid repeated freeze-thaw cycles.
Host	Rabbit
Uniprot ID	P42261

### Technical Details

Immunogen	Synthetic phosphopeptide derived from human GluR1 around the phosphorylation site of Serine 849.
Isotype	IgG
Form	Liquid
Concentration	1 mg/ml
Purification	The antibody was affinity-purified from rabbit antiserum by affinity-chromatography using epitope-specific immunogen and the purity is > 95% (by SDS-PAGE).
Suggested Dilutions	WB: 1:500-1:1000 IHC: 1:50-1:200

## Anti-GluR1 (phospho-S849) GRIA1 Antibody (A02677S849) Images



Western blot (WB) analysis of p-GluR1 (S849) pAb at 1:500 dilution Lane1:A375 whole cell lysate(40ug) Lane2:K562 whole cell lysate(40ug) Lane3:The Kidney tissue lysate of Mouse(40ug) Lane4:PC12 whole cell lysate(40ug)

### Submit a product review to [Biocompare.com](https://www.biocompare.com)

Submit a review of this product to [Biocompare.com](https://www.biocompare.com) to receive a \$20 Amazon.com giftcard! Your reviews help your fellow scientists make the right decisions. Thank you for your contribution.



Anti-GluR1 (phospho-S849) GRIA1 Antibody

For Research Use Only. Not for use in diagnostic procedures.