

## Anti-HE4/Wfdc2 Antibody Picoband®

Catalog Number: A02685-3

### About Wfdc2

WAP four-disulfide core domain protein 2, also known as Human Epididymis Protein 4 (HE4), is a protein that in humans is encoded by the WFDC2 gene. This gene encodes a protein that is a member of the WFDC domain family. The WFDC domain, or WAP Signature motif, contains eight cysteines forming four disulfide bonds at the core of the protein, and functions as a protease inhibitor in many family members. This gene is expressed in pulmonary epithelial cells, and was also found to be expressed in some ovarian cancers. The encoded protein is a small secretory protein, which may be involved in sperm maturation.

### Overview

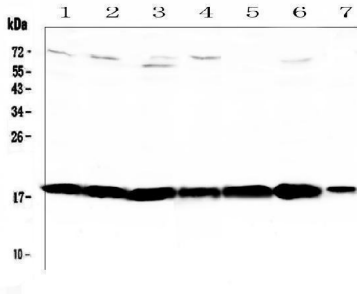
Product Name	Anti-HE4/Wfdc2 Antibody Picoband®
Reactive Species	Mouse, Rat
Description	Boster Bio Anti-HE4/Wfdc2 Antibody Picoband® catalog # A02685-3. Tested in IHC, WB applications. This antibody reacts with Mouse, Rat. The brand Picoband indicates this is a premium antibody that guarantees superior quality, high affinity, and strong signals with minimal background in Western blot applications. Only our best-performing antibodies are designated as Picoband, ensuring unmatched performance.
Application	IHC, WB, ELISA (Cap)
Clonality	Polyclonal
Formulation	Each vial contains 4mg Trehalose, 0.9mg NaCl, 0.2mg Na <sub>2</sub> HPO <sub>4</sub> , 0.05mg NaN <sub>3</sub> .
Storage Instructions	Store at -20°C for one year from date of receipt. After reconstitution, at 4°C for one month. It can also be aliquotted and stored frozen at -20°C for six months. Avoid repeated freeze-thaw cycles.
Host	Rabbit
Uniprot ID	Q8CHN3

### Technical Details

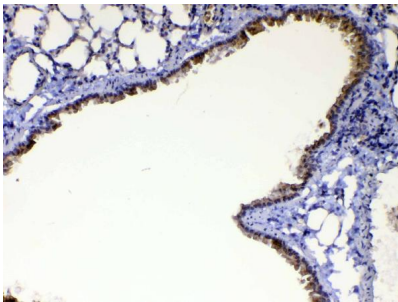
Immunogen	E. coli-derived rat HE4 recombinant protein (Position: E31-F168).
Recommended Detection Systems	Boster recommends Enhanced Chemiluminescent Kit with anti-Rabbit IgG (EK1002) for Western blot, and HRP Conjugated anti-Rabbit IgG Super Vision Assay Kit (SV0002-1) for IHC(P).
Cross Reactivity	No cross-reactivity with other proteins.
Isotype	Rabbit IgG
Form	Lyophilized
Concentration	Adding 0.2 ml of distilled water will yield a concentration of 500 ug/ml.

Purification	Immunogen affinity purified.
Suggested Dilutions	Western blot, 0.1-0.5ug/ml Immunohistochemistry (Paraffin-embedded Section), 0.5-1ug/ml ELISA (Cap), 1-5ug/ml

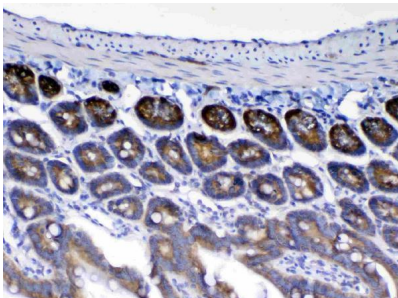
## Anti-HE4/Wfdc2 Antibody Picoband® (A02685-3) Images



Western blot analysis of HE4 using anti-HE4 antibody (A02685-3). Electrophoresis was performed on a 5-20% SDS-PAGE gel at 70V (Stacking gel) / 90V (Resolving gel) for 2-3 hours. The sample well of each lane was loaded with 50ug of sample under reducing conditions. Lane 1: rat testis tissue lysates, Lane 2: rat brain tissue lysates, Lane 3: rat thymus tissue lysates, Lane 4: mouse testis tissue lysates, Lane 5: mouse brain tissue lysates, Lane 6: mouse thymus tissue lysates, Lane 7: mouse HEPA1-6 whole cell lysates. After Electrophoresis, proteins were transferred to a Nitrocellulose membrane at 150mA for 50-90 minutes. Blocked the membrane with 5% Non-fat Milk/ TBS for 1.5 hour at RT. The membrane was incubated with rabbit anti-HE4 antigen affinity purified polyclonal antibody (Catalog # A02685-3) at 0.5 ug/mL overnight at 4 then washed with TBS-0.1%Tween 3 times with 5 minutes each and probed with a goat anti-rabbit IgG-HRP secondary antibody at a dilution of 1:10000 for 1.5 hour at RT. The signal is developed using an Enhanced Chemiluminescent detection (ECL) kit (Catalog # EK1002) with Tanon 5200 system. A specific band was detected for HE4 at approximately 19KD. The expected band size for HE4 is at 13KD.

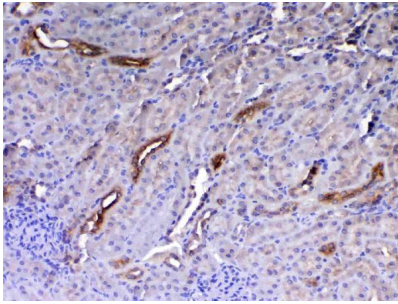


IHC analysis of HE4 using anti-HE4 antibody (A02685-3). HE4 was detected in paraffin-embedded section of mouse lung tissue. Heat mediated antigen retrieval was performed in citrate buffer (pH6, epitope retrieval solution) for 20 mins. The tissue section was blocked with 10% goat serum. The tissue section was then incubated with 1ug/ml rabbit anti-HE4 Antibody (A02685-3) overnight at 4 Biotinylated goat anti-rabbit IgG was used as secondary antibody and incubated for 30 minutes at 37 The tissue section was developed using Streptavidin-Biotin-Complex (SABC)(Catalog # SA1022) with DAB as the chromogen.

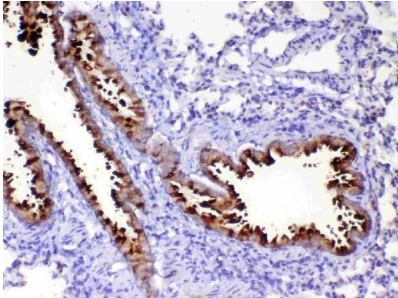


IHC analysis of HE4 using anti-HE4 antibody (A02685-3). HE4 was detected in paraffin-embedded section of mouse small intestine tissue. Heat mediated antigen retrieval was performed in citrate buffer (pH6, epitope retrieval solution) for 20 mins. The tissue section was blocked with 10% goat serum. The tissue section was then incubated with 1ug/ml rabbit anti-HE4 Antibody (A02685-3) overnight at 4 Biotinylated goat anti-rabbit IgG was used as secondary antibody and incubated for 30 minutes at 37 The tissue section was developed using Streptavidin-Biotin-Complex (SABC)(Catalog # SA1022) with DAB as the chromogen.

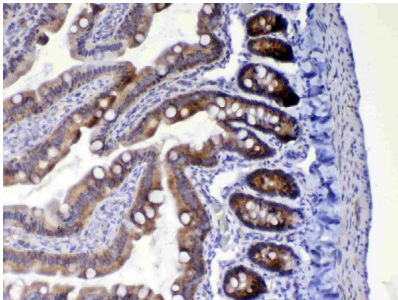
IHC analysis of HE4 using anti-HE4 antibody (A02685-3). HE4 was detected in paraffin-embedded section of rat kidney tissue. Heat mediated antigen retrieval was performed in citrate buffer (pH6, epitope retrieval solution) for 20 mins. The tissue section was blocked with 10% goat serum. The



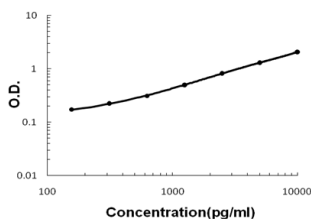
tissue section was then incubated with 1ug/ml rabbit anti-HE4 Antibody (A02685-3) overnight at 4 Biotinylated goat anti-rabbit IgG was used as secondary antibody and incubated for 30 minutes at 37 The tissue section was developed using Streptavidin-Biotin-Complex (SABC)(Catalog # SA1022) with DAB as the chromogen.



IHC analysis of HE4 using anti-HE4 antibody (A02685-3).HE4 was detected in paraffin-embedded section of rat lung tissue. Heat mediated antigen retrieval was performed in citrate buffer (pH6, epitope retrieval solution) for 20 mins. The tissue section was blocked with 10% goat serum. The tissue section was then incubated with 1ug/ml rabbit anti-HE4 Antibody (A02685-3) overnight at 4 Biotinylated goat anti-rabbit IgG was used as secondary antibody and incubated for 30 minutes at 37 The tissue section was developed using Streptavidin-Biotin-Complex (SABC)(Catalog # SA1022) with DAB as the chromogen.



IHC analysis of HE4 using anti-HE4 antibody (A02685-3).HE4 was detected in paraffin-embedded section of rat small intestine tissue. Heat mediated antigen retrieval was performed in citrate buffer (pH6, epitope retrieval solution) for 20 mins. The tissue section was blocked with 10% goat serum. The tissue section was then incubated with 1ug/ml rabbit anti-HE4 Antibody (A02685-3) overnight at 4 Biotinylated goat anti-rabbit IgG was used as secondary antibody and incubated for 30 minutes at 37 The tissue section was developed using Streptavidin-Biotin-Complex (SABC)(Catalog # SA1022) with DAB as the chromogen.



Sandwich ELISA - Recombinant rat HE4/Wfdc2 protein standard curve. Use in combination with reagents from Rat HE4/Wfdc2 ELISA Kit EZ-Set (DIY Antibody Pairs) (EZ1624).

**Submit a product review to Biocompare.com**

Submit a review of this product to Biocompare.com to receive a \$20 Amazon.com giftcard! Your reviews help your fellow scientists make the right decisions. Thank you for your contribution.



For Research Use Only. Not for use in diagnostic procedures.