

Anti-HE4/Wfdc2 Antibody

Catalog Number: A02685-5

About Wfdc2

WAP four-disulfide core domain protein 2, also known as Human Epididymis Protein 4 (HE4), is a protein that in humans is encoded by the WFDC2 gene. This gene encodes a protein that is a member of the WFDC domain family. The WFDC domain, or WAP Signature motif, contains eight cysteines forming four disulfide bonds at the core of the protein, and functions as a protease inhibitor in many family members. This gene is expressed in pulmonary epithelial cells, and was also found to be expressed in some ovarian cancers. The encoded protein is a small secretory protein, which may be involved in sperm maturation.

Overview

| | |
|----------------------|---|
| Product Name | Anti-HE4/Wfdc2 Antibody |
| Reactive Species | Rat |
| Description | Boster Bio Anti-HE4/Wfdc2 Antibody catalog # A02685-5. Tested in ELISA applications. This antibody reacts with Rat. |
| Application | ELISA (Cap) |
| Clonality | Polyclonal |
| Formulation | Each vial contains 4mg Trehalose, 0.9mg NaCl, 0.2mg Na2HPO4, 0.05mg NaN3. |
| Storage Instructions | Store at -20°C for one year from date of receipt. After reconstitution, at 4°C for one month. It can also be aliquotted and stored frozen at -20°C for six months. Avoid repeated freeze-thaw cycles. |
| Host | Rabbit |
| Uniprot ID | Q8CHN3 |

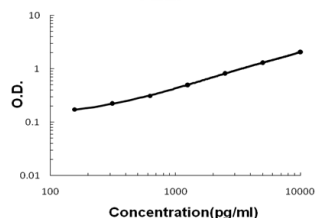
Technical Details

| | |
|-------------------------------|--|
| Immunogen | E. coli-derived rat HE4 recombinant protein (Position: E31-F168). |
| Recommended Detection Systems | Boster recommends Enhanced Chemiluminescent Kit with anti-Rabbit IgG (EK1002) for Western blot, and HRP Conjugated anti-Rabbit IgG Super Vision Assay Kit (SV0002-1) for IHC(P). |
| Cross Reactivity | No cross-reactivity with other proteins. |
| Isotype | Rabbit IgG |
| Form | Lyophilized |
| Concentration | Adding 0.2 ml of distilled water will yield a concentration of 500 ug/ml. |
| Purification | Immunogen affinity purified. |

Suggested Dilutions

ELISA Capture (Matched Antibody Pair), 2-8ug/ml

Anti-HE4/Wfdc2 Antibody (A02685-5) Images



Sandwich ELISA - Recombinant Rat HE4 protein standard curve. Use in combination with reagents from Rat HE4 ELISA Kit EZ-Set (DIY Antibody Pairs) (EZ1624).

Submit a product review to Biocompare.com

Submit a review of this product to Biocompare.com to receive a \$20 Amazon.com giftcard! Your reviews help your fellow scientists make the right decisions. Thank you for your contribution.



Anti-HE4/Wfdc2 Antibody

For Research Use Only. Not for use in diagnostic procedures.