

## Anti-SUB1 Antibody

Catalog Number: A02698

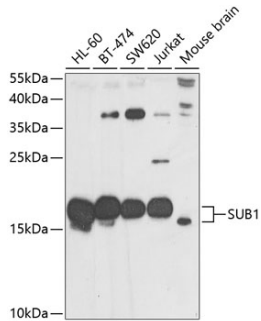
### Overview

Product Name	Anti-SUB1 Antibody
Reactive Species	Human, Mouse
Description	Boster Bio Anti-SUB1 Antibody catalog # A02698. Tested in WB,ICC/IF,IP applications. This antibody reacts with Human,Mouse.
Application	IP, IF, ICC, WB
Clonality	Polyclonal
Formulation	Rabbit IgG, 1mg/ml in PBS with 0.02% sodium azide, 50% glycerol, pH7.2
Storage Instructions	Store at -20°C for one year. For short term storage and frequent use, store at 4°C for up to one month. Avoid repeated freeze-thaw cycles.
Host	Rabbit
Uniprot ID	P53999

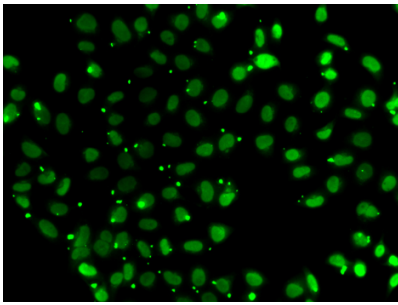
### Technical Details

Immunogen	Recombinant fusion protein of human SUB1(NP_006704.3).
Isotype	IgG
Form	Liquid
Concentration	1 mg/ml
Purification	The antibody was affinity-purified from rabbit antiserum by affinity-chromatography using epitope-specific immunogen and the purity is > 95% (by SDS-PAGE).
Suggested Dilutions	WB: 1:500-1:2000 ICC/IF: 1:50-1:100 IP: 1:20-1:50

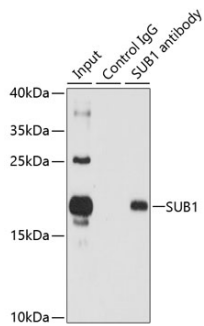
## Anti-SUB1 Antibody (A02698) Images



Western blot analysis of extracts of various cell lines, using SUB1 antibody at 1:1000 dilution. Secondary antibody: HRP Goat Anti-Rabbit IgG at 1:10000 dilution. Lysates/proteins: 25ug per lane. Blocking buffer: 3% nonfat dry milk in TBST. Detection: ECL Basic Kit. Exposure time: 30s.



Immunofluorescence analysis of A549 cells using SUB1 antibody.



Immunoprecipitation analysis of 150ug extracts of HL60 cells using 3ug SUB1 antibody. Western blot was performed from the immunoprecipitate using SUB1 antibody at a dilution of 1:500.

### Submit a product review to [Biocompare.com](https://www.biocompare.com)

Submit a review of this product to [Biocompare.com](https://www.biocompare.com) to receive a \$20 Amazon.com giftcard! Your reviews help your fellow scientists make the right decisions. Thank you for your contribution.



### Anti-SUB1 Antibody

For Research Use Only. Not for use in diagnostic procedures.