

Anti-CAF-1 p150 CHAF1A Antibody

Catalog Number: A02732-1

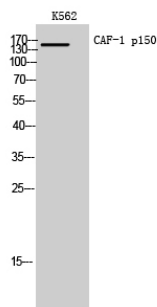
Overview

Product Name	Anti-CAF-1 p150 CHAF1A Antibody
Reactive Species	Human, Mouse
Description	Boster Bio Anti-CAF-1 p150 CHAF1A Antibody catalog # A02732-1. Tested in WB, ELISA applications. This antibody reacts with Human, Mouse.
Application	ELISA, WB
Clonality	Polyclonal
Formulation	Liquid in PBS containing 50% glycerol, 0.5% stabilizing protein and 0.02% sodium azide. *This antibody is supplied in a stabilized formulation. Compatibility with conjugation reactions depends on the chemistry of the conjugation method used. For conjugation methods that are not compatible with the stabilizing components present in this formulation, a carrier-free antibody format is required.
Storage Instructions	Store at -20°C for one year. For short term storage and frequent use, store at 4°C for up to one month. Avoid repeated freeze-thaw cycles.
Host	Rabbit
Uniprot ID	Q13111

Technical Details

Immunogen	Synthesized peptide derived from CAF-1 p150 . at AA range: 300-380
Isotype	IgG
Form	Liquid
Concentration	1 mg/ml
Purification	Immunogen affinity purified
Suggested Dilutions	WB 1:500-1:2000 ELISA 1:10000

Anti-CAF-1 p150 CHAF1A Antibody (A02732-1) Images



Western Blot analysis of K562 cells using CAF-1 p150 Polyclonal Antibody. Secondary antibody was diluted at 1:20000 cells nucleus extracted by Minute TM Cytoplasmic and Nuclear Fractionation kit.

Submit a product review to Biocompare.com

Submit a review of this product to Biocompare.com to receive a \$20 Amazon.com giftcard! Your reviews help your fellow scientists make the right decisions. Thank you for your contribution.



Anti-CAF-1 p150 CHAF1A Antibody

For Research Use Only. Not for use in diagnostic procedures.