

## Anti-BANF1 Antibody

Catalog Number: A02734-1

### About BANF1

Barrier-to-autointegration factor 1 (BANF1) is a conserved chromatin protein that non-specifically binds double-stranded DNA. BANF1 also interacts with a family of nuclear proteins that include LAP2, emerin, and MAN1. It is also a host cell component of retroviral pre-integration complexes (PICs), including that of HIV. BANF1 will bind to p55 Gag (the structural precursor of HIV-1 virions) as well as its cleaved product matrix. In addition to being a host cell component of the PIC, it is thought that BANF1 is also present at low levels in incoming virions, and thus might contribute to the assembly or activity of HIV-1 PICs through direct binding to matrix as well as DNA.

### Overview

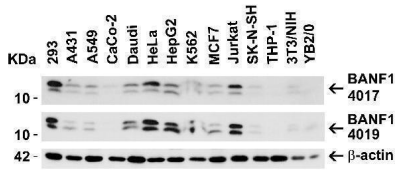
Product Name	Anti-BANF1 Antibody
Reactive Species	Human, Mouse, Rat
Description	Boster Bio Anti-BANF1 Antibody (Catalog # A02734-1). Tested in ELISA, WB, IF applications. This antibody reacts with Human, Mouse, Rat.
Application	ELISA, IF, WB
Clonality	Polyclonal
Formulation	BANF1 Antibody is supplied in PBS containing 0.02% sodium azide.
Storage Instructions	BANF1 antibody can be stored at 4°C for three months and -20°C, stable for up to one year. Avoid repeated freeze-thaw cycles. Antibodies should not be exposed to prolonged high temperatures.
Host	Rabbit
Uniprot ID	O75531

### Technical Details

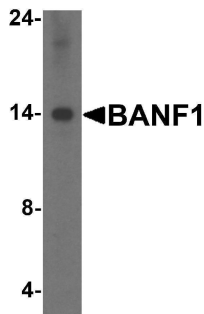
Immunogen	Anti-BANF1 antibody was raised against a peptide corresponding to 19 amino acids near the amino terminus of human BANF1. The immunogen is located within the first 50 amino acids of BANF1.
Predicted Reactive Species	Bovine
Isotype	IgG
Form	Liquid
Concentration	1 mg/mL
Purification	BANF1 Antibody is affinity chromatography purified via peptide column.
Suggested Dilutions	WB: 1-2 ug/mL; IF: 20 ug/mL. Antibody validated: Western Blot in human, mouse and rat samples; Immunofluorescence in human

samples. All other applications and species not yet tested. Optimal dilutions for each application should be determined by the researcher.

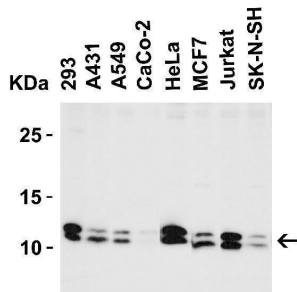
## Anti-BANF1 Antibody (A02734-1) Images



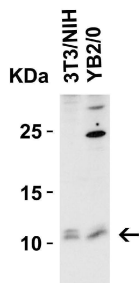
Independent Antibody Validation (IAV) via Protein Expression Profile in Human Lines Loading: 15 ug of lysates per lane. Antibodies: BANF1, 4017 (2 ug/mL), BANF1, A02734-1 (2 ug/mL) and beta-actin (1.5 ug/mL), 1h incubation at RT in 5% NFDm/TBST. Secondary: Goat anti-rabbit IgG HRP conjugate at 1:10000 dilution.



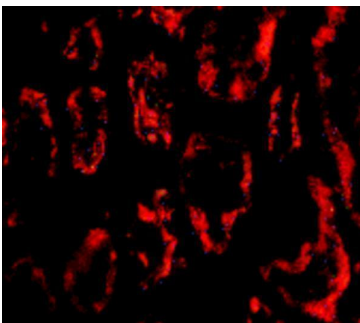
Western Blot Validation in HeLa Cell Lysate Loading: 15 ug of lysates per lane. Antibodies: BANF1 A02734-1 (1 ug/mL), 1h incubation at RT in 5% NFDm/TBST. Secondary: Goat anti-rabbit IgG HRP conjugate at 1:10000 dilution.



Western Blot Validation in Human Cell Lines Loading: 15 ug of lysates per lane. Antibodies: BANF1, A02734-1 (2 ug/mL), 1h incubation at RT in 5% NFDm/TBST. Secondary: Goat anti-rabbit IgG HRP conjugate at 1:10000 dilution.



Western Blot Validation in Mouse and Rat Cell Lines Loading: 15 ug of lysates per lane. Antibodies: BANF1, A02734-1 (2 ug/mL), 1h incubation at RT in 5% NFDm/TBST. Secondary: Goat anti-rabbit IgG HRP conjugate at 1:10000 dilution.



Immunofluorescence Validation of BANF1 in Human Kidney Tissue Immunofluorescent analysis of 4% paraformaldehyde-fixed human kidney tissue labeling BANF1 with A02734-1 at 20 ug/mL, followed by goat anti-rabbit IgG secondary antibody at 1/500 dilution (red).

## Submit a product review to Biocompare.com

Submit a review of this product to Biocompare.com to receive a \$20 Amazon.com giftcard! Your reviews help your fellow scientists make the right decisions. Thank you for your contribution.



Anti-BANF1 Antibody

For Research Use Only. Not for use in diagnostic procedures.