

Anti-Klk7 Antibody Picoband®

Catalog Number: A02739-1

About Klk7

Kallikrein-related peptidase 7 (KLK7) is a serine protease that in humans is encoded by the KLK7 gene. KLK7 is a chymotrypsin-like serine protease of the member of peptidase S1 family. It is synthesized with a signal peptide of 22 amino acids (aa 1-22) and a propeptide region (aa 23-29) that are subsequently cleaved to generate the mature form. Human KLK7 displays about 40 to 60% amino acid homology with other members of the family. It cleaves proteins with aromatic side chains in the P1 position. KLK7 is abundantly expressed in the skin and is also present in the brain, mammary gland, cerebellum, spinal cord, and kidney. Lower levels of expression have been reported in salivary glands, uterus, thymus, thyroid, placenta, trachea, and testis. Its levels are shown to be up-regulated in ovarian carcinoma, especially late-stage serous carcinoma. Less differentiated tumors of more advanced stage show higher level KLK7 expression. KLK7 activity is inhibited by zinc and copper ions

Overview

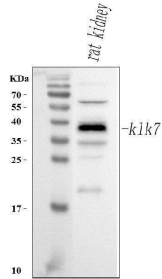
Product Name	Anti-Klk7 Antibody Picoband®
Reactive Species	Rat
Description	Boster Bio Anti-Klk7 Antibody Picoband® catalog # A02739-1. Tested in ELISA, IHC, WB applications. This antibody reacts with Rat. The brand Picoband indicates this is a premium antibody that guarantees superior quality, high affinity, and strong signals with minimal background in Western blot applications. Only our best-performing antibodies are designated as Picoband, ensuring unmatched performance.
Application	ELISA, IHC, WB
Clonality	Polyclonal
Formulation	Each vial contains 4 mg Trehalose, 0.9 mg NaCl, 0.2 mg Na ₂ HPO ₄ .
Storage Instructions	At -20°C for one year from date of receipt. After reconstitution, at 4°C for one month. It can also be aliquotted and stored frozen at -20°C for six months. Avoid repeated freezing and thawing.
Host	Rabbit
Uniprot ID	P36373

Technical Details

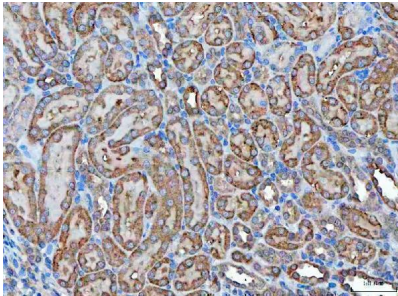
Immunogen	E.coli-derived rat Klk7 recombinant protein (Position: K30-N238).
Recommended Detection Systems	Boster recommends Enhanced Chemiluminescent Kit with anti-Rabbit IgG (EK1002) for Western blot, and HRP Conjugated anti-Rabbit IgG Super Vision Assay Kit (SV0002-1) for IHC(P).
Cross Reactivity	No cross-reactivity with other proteins.
Isotype	Rabbit IgG

Form	Lyophilized
Concentration	Adding 0.2 ml of distilled water will yield a concentration of 500 µg/ml.
Purification	Immunogen affinity purified.
Suggested Dilutions	Western blot, 0.25-0.5 µg/ml, Rat Immunohistochemistry(Paraffin-embedded Section), 2-5 µg/ml, Rat ELISA, 0.1-0.5 µg/ml, Rat

Anti-Klk7 Antibody Picoband® (A02739-1) Images



Western blot analysis of Klk7 using anti-Klk7 antibody (A02739-1). Electrophoresis was performed on a 5-20% SDS-PAGE gel at 70V (Stacking gel) / 90V (Resolving gel) for 2-3 hours. The sample well of each lane was loaded with 30 ug of sample under reducing conditions. Lane 1: rat kidney tissue lysates. After electrophoresis, proteins were transferred to a nitrocellulose membrane at 150 mA for 50-90 minutes. Blocked the membrane with 5% non-fat milk/TBS for 1.5 hour at RT. The membrane was incubated with rabbit anti-Klk7 antigen affinity purified polyclonal antibody (Catalog # A02739-1) at 0.5 ug/mL overnight at 4°C, then washed with TBS-0.1%Tween 3 times with 5 minutes each and probed with a goat anti-rabbit IgG-HRP secondary antibody at a dilution of 1:5000 for 1.5 hour at RT. The signal is developed using an Enhanced Chemiluminescent detection (ECL) kit (Catalog # EK1002) with Tanon 5200 system. A specific band was detected for Klk7 at approximately 38 kDa. The expected band size for Klk7 is at 28 kDa.



IHC analysis of Klk7 using anti-Klk7 antibody (A02739-1). Klk7 was detected in a paraffin-embedded section of rat kidney tissue. Heat mediated antigen retrieval was performed in EDTA buffer (pH 8.0, epitope retrieval solution). The tissue section was blocked with 10% goat serum. The tissue section was then incubated with 2 ug/ml rabbit anti-Klk7 Antibody (A02739-1) overnight at 4°C. Peroxidase Conjugated Goat Anti-rabbit IgG was used as secondary antibody and incubated for 30 minutes at 37°C. The tissue section was developed using HRP Conjugated Rabbit IgG Super Vision Assay Kit (Catalog # SV0002) with DAB as the chromogen.

Submit a product review to [Biocompare.com](https://www.biocompare.com)

Submit a review of this product to [Biocompare.com](https://www.biocompare.com) to receive a \$20 Amazon.com giftcard! Your reviews help your fellow scientists make the right decisions. Thank you for your contribution.



Anti-Klk7 Antibody

For Research Use Only. Not for use in diagnostic procedures.