

Anti-NR2C2 Antibody (C-term)

Catalog Number: A02752-1

About NR2C2

Members of the nuclear hormone receptor family, such as NR2C2, act as ligand-activated transcription factors. The proteins have an N-terminal transactivation domain, a central DNA-binding domain with 2 zinc fingers, and a ligand-binding domain at the C terminus. The activated receptor/ligand complex is translocated to the nucleus where it binds to hormone response elements of target genes (Yoshikawa et al., 1996 [PubMed 8661150]).

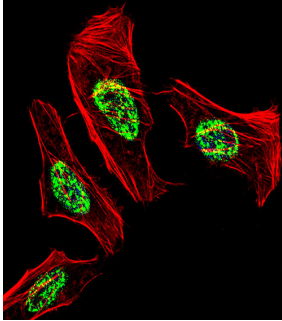
Overview

Product Name	Anti-NR2C2 Antibody (C-term)
Reactive Species	Human
Description	Boster Bio Anti-NR2C2 Antibody (C-term) (Catalog # A02752-1). Tested in WB, IF application(s). This antibody reacts with Human.
Application	IF, WB
Clonality	Polyclonal
Formulation	Purified polyclonal antibody supplied in PBS with 0.09% (W/V) sodium azide.
Storage Instructions	Maintain refrigerated at 2-8°C for up to 2 weeks. For long-term storage, store at -20°C in small aliquots to prevent freeze-thaw cycles.
Host	Rabbit
Uniprot ID	P49116

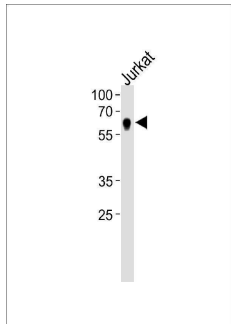
Technical Details

Immunogen	This NR2C2 antibody is generated from rabbits immunized with a KLH conjugated synthetic peptide between 438-466 amino acids from the C-terminal region of human NR2C2.
Predicted Reactive Species	Mouse, Rat
Isotype	Rabbit IgG
Purification	This antibody is purified through a protein A column, followed by peptide affinity purification.
Suggested Dilutions	IF: 1:10-1:50 WB: 1:1000

Anti-NR2C2 Antibody (C-term) (A02752-1) Images



Fluorescent confocal image of HeLa cell stained with NR2C2 Antibody (C-term). HeLa cells were fixed with 4% PFA (20 min), permeabilized with Triton X-100 (0.1%, 10 min), then incubated with NR2C2 primary antibody (1:25, 1 h at 37°C). For secondary antibody, Alexa Fluor® 488 conjugated donkey anti-rabbit antibody (green) was used (1:400, 50 min at 37°C). Cytoplasmic actin was counterstained with Alexa Fluor® 555 (red) conjugated Phalloidin (7 units/ml, 1 h at 37°C). Nuclei were counterstained with DAPI (10 µg/ml, 10 min). NR2C2 immunoreactivity is localized to Nucleus significantly.



NR2C2 Antibody (C-term) western blot analysis in Jurkat cell line lysates (35 µg/lane). This demonstrates the NR2C2 antibody detected the NR2C2 protein (arrow).

Submit a product review to [Biocompare.com](https://www.biocompare.com)

Submit a review of this product to [Biocompare.com](https://www.biocompare.com) to receive a \$20 Amazon.com giftcard! Your reviews help your fellow scientists make the right decisions. Thank you for your contribution.



Anti-NR2C2 Antibody (C-term)

For Research Use Only. Not for use in diagnostic procedures.