

## Anti-Ephrin-B1/2 EFNB1 Antibody

Catalog Number: A02767

### About EFNB1

Glutamate receptors are the predominant excitatory neurotransmitter receptors in the mammalian brain and are activated in a variety of normal neurophysiologic processes. These receptors are heteromeric protein complexes with multiple subunits, each possessing transmembrane regions, and all arranged to form a ligand-gated ion channel. The classification of glutamate receptors is based on their activation by different pharmacologic agonists. This gene belongs to a family of  $\alpha$ -amino-3-hydroxy-5-methyl-4-isoxazole propionate (AMPA) receptors. Alternatively spliced transcript variants encoding different isoforms have been found for this gene.

Emamian ES, et al. (2004) J Neurosci. 24(7): 1561-4  
Palmer, C.L. et al. (2005) Pharmacol. Rev. 57, 253-277.

### Overview

Product Name	Anti-Ephrin-B1/2 EFNB1 Antibody
Reactive Species	Human, Mouse, Rat
Description	Boster Bio Anti-Ephrin-B1/2 EFNB1 Antibody catalog # A02767. Tested in WB applications. This antibody reacts with Human, Mouse, Rat.
Application	WB
Clonality	Monoclonal 8C4C4
Formulation	Liquid in PBS containing 50% glycerol, 0.5% BSA and 0.02% sodium azide.
Storage Instructions	Store at -20°C for one year. For short term storage and frequent use, store at 4°C for up to one month. Avoid repeated freeze-thaw cycles.
Host	Rabbit
Uniprot ID	P98172

### Technical Details

Immunogen	Synthesized peptide derived from human Ephrin-B1/2 around the non-phosphorylation site of Y330.
Predicted Reactive Species	Bovine, Canine, Equine, Rabbit
Isotype	IgG
Form	Liquid
Concentration	This antibody's concentration is >0.5mg/ml.
Purification	Immunogen affinity purified

**Suggested Dilutions**

Dilute the sample so that the expected range of concentrations fall within the detection range of this kit.

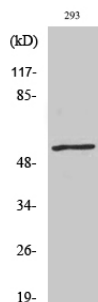
If the expected range of concentration is unknown, a pilot test should be conducted to decide the optimal dilution ratio for your samples.

Some PubMed article(s) citing the expression level of this target are as follows:

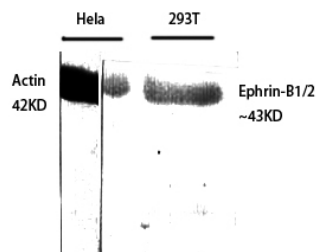
Boster Bio's internal QC testing used:

WB, 1:500-1:2000

## Anti-Ephrin-B1/2 EFNB1 Antibody (A02767) Images



Western Blot (WB) analysis of 293 cells using Ephrin-B1/2 Polyclonal antibody.



Western Blot (WB) analysis of specific cells using Ephrin-B1/2 Polyclonal antibody.

## Submit a product review to Biocompare.com

Submit a review of this product to Biocompare.com to receive a \$20 Amazon.com giftcard! Your reviews help your fellow scientists make the right decisions. Thank you for your contribution.



Anti-Ephrin-B1/2 EFNB1 Antibody