

Anti-IZUMO1 Antibody

Catalog Number: A02772

About IZUMO1

IZUMO1, a sperm-specific protein, is essential for sperm-egg plasma membrane binding and fusion. It is involved in the fertilization process and in the fusion of the sperm with the egg (1,2). IZUMO1 is expressed as at least four isoforms produced by alternative splicing and contains one Ig-like (immunoglobulin-like) C2-type domain (3). Lack of IZUMO1 in males, due to homozygous mutation in the gene that encodes IZUMO1, results in sterility due to an inability to penetrate the plasma membrane of the egg (4).

Overview

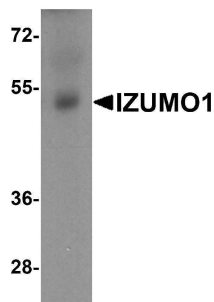
Product Name	Anti-IZUMO1 Antibody
Reactive Species	Human
Description	Boster Bio Anti-IZUMO1 Antibody (Catalog # A02772). Tested in ELISA, WB, IHC-P applications. This antibody reacts with Human.
Application	ELISA, IHC-P, WB
Clonality	Polyclonal
Formulation	IZUMO1 antibody is supplied in PBS containing 0.02% sodium azide.
Storage Instructions	IZUMO1 antibody can be stored at 4°C for three months and -20°C, stable for up to one year.
Host	Rabbit
Uniprot ID	Q8IYV9

Technical Details

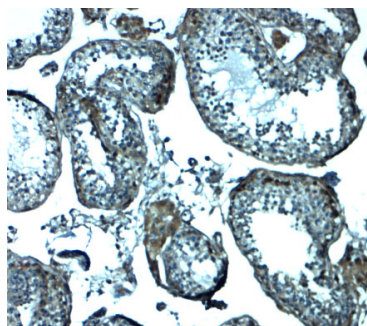
Immunogen	IZUMO1 antibody was raised against an 18 amino acid peptide near the center of human IZUMO1. The immunogen is located within amino acids 170 - 220 of IZUMO1.
Predicted Reactive Species	Mouse, Rat
Cross Reactivity	IZUMO1 antibody is human specific. At least four isoforms of IZUMO1 are known to exist; this antibody will detect the two longest isoforms.
Isotype	IgG
Form	Liquid
Concentration	1 mg/mL
Purification	IZUMO1 antibody is affinity chromatography purified via peptide column.
Suggested Dilutions	IZUMO1 antibody can be used for detection of IZUMO1 by Western blot at 1 - 2 ug/ml. Antibody

can also be used for immunohistochemistry starting at 2.5 ug/mL.
Antibody validated: Western Blot in human samples and Immunohistochemistry in human samples.
All other applications and species not yet tested. Optimal dilutions for each application should be determined by the researcher.

Anti-IZUMO1 Antibody (A02772) Images



Western blot analysis of IZUMO1 in human testis tissue lysate with IZUMO1 antibody at 1 ug/ml.



Immunohistochemistry of IZUMO1 in human testis tissue with IZUMO1 antibody at 2.5 ug/mL.

Submit a product review to [Biocompare.com](https://www.biocompare.com)

Submit a review of this product to [Biocompare.com](https://www.biocompare.com) to receive a \$20 Amazon.com giftcard! Your reviews help your fellow scientists make the right decisions. Thank you for your contribution.



Anti-IZUMO1 Antibody

For Research Use Only. Not for use in diagnostic procedures.