

Anti-Kallikrein 1/KLK1 Antibody Picoband®

Catalog Number: A02789

About KLK1

KLK1 (KALLIKREIN 1), also called KLKR, is a protein that in humans is encoded by the KLK1 gene. KLK1 is a member of the peptidase S1 family. KLK1 is a serine protease that generates Lys-bradykinin by specific proteolysis of kininogen-1. The KLK1 gene is one of the fifteen kallikrein subfamily members located in a cluster on chromosome 19 and its exact cytogenetic location is 19q13.33. The KLK1 gene contains 5 coding exons. And KLK1 is the most centromeric gene in the cluster. Mice lacking tissue kallikrein are unable to generate significant levels of kinins in most tissues and develop cardiovascular abnormalities early in adulthood despite normal blood pressure. The protein is functionally conserved in its capacity to release the vasoactive peptide, Lys-bradykinin, from low molecular weight kininogen.

Overview

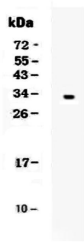
Product Name	Anti-Kallikrein 1/KLK1 Antibody Picoband®
Reactive Species	Human
Description	Boster Bio Anti-Kallikrein 1/KLK1 Antibody Picoband® catalog # A02789. Tested in ELISA, WB applications. This antibody reacts with Human. The brand Picoband indicates this is a premium antibody that guarantees superior quality, high affinity, and strong signals with minimal background in Western blot applications. Only our best-performing antibodies are designated as Picoband, ensuring unmatched performance.
Application	WB, ELISA (Cap)
Clonality	Polyclonal
Formulation	Each vial contains 4mg Trehalose, 0.9mg NaCl, 0.2mg Na ₂ HPO ₄ , 0.05mg NaN ₃ .
Storage Instructions	Store at -20°C for one year from date of receipt. After reconstitution, at 4°C for one month. It can also be aliquotted and stored frozen at -20°C for six months. Avoid repeated freeze-thaw cycles.
Host	Rabbit
Uniprot ID	P06870

Technical Details

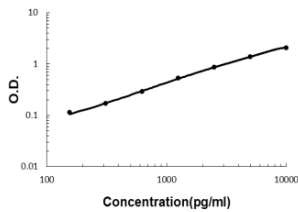
Immunogen	E. coli-derived human Kallikrein 1 recombinant protein (Position: I25-S262).
Recommended Detection Systems	Boster recommends Enhanced Chemiluminescent Kit with anti-Rabbit IgG (EK1002) for Western blot.
Cross Reactivity	No cross-reactivity with other proteins.
Isotype	Rabbit IgG
Form	Lyophilized

Concentration	Adding 0.2 ml of distilled water will yield a concentration of 500 ug/ml.
Purification	Immunogen affinity purified.
Suggested Dilutions	Western blot, 0.1-0.5ug/ml ELISA (Cap), 1-5ug/ml

Anti-Kallikrein 1/KLK1 Antibody Picoband® (A02789) Images



Western blot analysis of Kallikrein 1 using anti-Kallikrein 1 antibody (A02789). Electrophoresis was performed on a 5-20% SDS-PAGE gel at 70V (Stacking gel) / 90V (Resolving gel) for 2-3 hours. Lane 1: recombinant human KLK1 protein 1ng. After Electrophoresis, proteins were transferred to a Nitrocellulose membrane at 150mA for 50-90 minutes. Blocked the membrane with 5% Non-fat Milk/ TBS for 1.5 hour at RT. The membrane was incubated with rabbit anti-Kallikrein 1 antigen affinity purified polyclonal antibody (Catalog # A02789) at 0.5 ug/mL overnight at 4°C, then washed with TBS-0.1%Tween 3 times with 5 minutes each and probed with a goat anti-rabbit IgG-HRP secondary antibody at a dilution of 1:10000 for 1.5 hour at RT. The signal is developed using an Enhanced Chemiluminescent detection (ECL) kit (Catalog # EK1002) with Tanon 5200 system. A specific band was detected for Kallikrein 1 at approximately 32KD. The expected band size for Kallikrein 1 is at 29KD.



Sandwich ELISA - Recombinant human Kallikrein 1/KLK1 protein standard curve. Use in combination with reagents from Human Kallikrein 1/KLK1 ELISA Kit EZ-Set (DIY Antibody Pairs) (EZ0903).

2 Publications Citing This Product

1. PubMed ID: 28977871, The Goblet Cell Protein Clca1 (Alias mClca3 or Gob-5) Is Not Required for Intestinal Mucus Synthesis, Structure and Barrier Function in Naive or DSS-Challenged Mice
2. PubMed ID: 25341032, Dynamic involvement of ATG5 in cellular stress responses

Visit bosterbio.com/anti-kallikrein-1-antibody-a02789-boster.html to see all 2 publications.

Submit a product review to Biocompare.com

Submit a review of this product to Biocompare.com to receive a \$20 Amazon.com giftcard! Your reviews help your fellow scientists make the right decisions. Thank you for your contribution.



Anti-Kallikrein 1/KLK1 Antibody

For Research Use Only. Not for use in diagnostic procedures.