

Anti-EBP1 Antibody (C-term)

Catalog Number: A02791-2

About PA2G4

PA2G4 is an RNA-binding protein that is involved in growth regulation. This protein is present in pre-ribosomal ribonucleoprotein complexes and may be involved in ribosome assembly and the regulation of intermediate and late steps of rRNA processing. This protein can interact with the cytoplasmic domain of the ErbB3 receptor and may contribute to transducing growth regulatory signals. This protein is also a transcriptional co-repressor of androgen receptor-regulated genes and other cell cycle regulatory genes through its interactions with histone deacetylases. This protein has been implicated in growth inhibition and the induction of differentiation of human cancer cells.

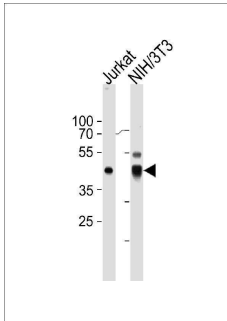
Overview

Product Name	Anti-EBP1 Antibody (C-term)
Reactive Species	Human, Mouse
Description	Boster Bio Anti-EBP1 Antibody (C-term) (Catalog # A02791-2). Tested in WB, Flow Cytometry, IHC-P application(s). This antibody reacts with Human, Mouse.
Application	Flow Cytometry, IHC-P, WB
Clonality	Polyclonal
Formulation	Purified polyclonal antibody supplied in PBS with 0.09% (W/V) sodium azide.
Storage Instructions	Maintain refrigerated at 2-8°C for up to 2 weeks. For long-term storage, store at -20°C in small aliquots to prevent freeze-thaw cycles.
Host	Rabbit
Uniprot ID	Q9UQ80

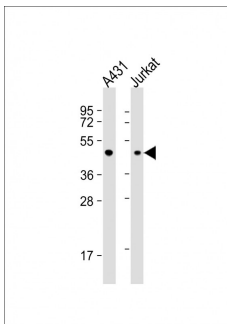
Technical Details

Immunogen	This EBP1 antibody is generated from rabbits immunized with a KLH conjugated synthetic peptide between 322-350 amino acids from the C-terminal region of human EBP1.
Predicted Reactive Species	Rat
Isotype	Rabbit IgG
Purification	This antibody is prepared by Saturated Ammonium Sulfate (SAS) precipitation followed by dialysis against PBS.
Suggested Dilutions	WB: 1:1000 IHC-P: 1:50-1:100 FC: 1:10-1:50

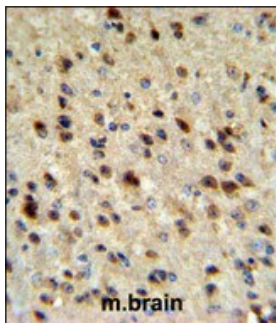
Anti-EBP1 Antibody (C-term) (A02791-2) Images



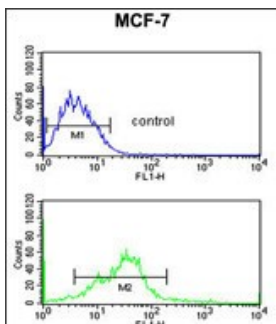
EBP1 Antibody (C-term) western blot analysis in Jurkat, mouse NIH/3T3 cell line lysates (35ug/lane). This demonstrates the EBP1 antibody detected the EBP1 protein (arrow).



All lanes : Anti-EBP1 Antibody (C-term) at 1:1000 dilution
Lane 1: A431 whole cell lysate
Lane 2: Jurkat whole cell lysate
Lysates/proteins at 20 µg per lane. Secondary Goat Anti-Rabbit IgG, (H+L), Peroxidase conjugated at 1/10000 dilution. Predicted band size : 44 kDa
Blocking/Dilution buffer: 5% NFDM/TBST.



EBP1 Antibody (C-term) IHC analysis in formalin fixed and paraffin embedded mouse brain tissue followed by peroxidase conjugation of the secondary antibody and DAB staining. This data demonstrates the use of the EBP1 Antibody (C-term) for immunohistochemistry. Clinical relevance has not been evaluated.



EBP1 Antibody (C-term) flow cytometric analysis of MCF-7 cells (bottom histogram) compared to a negative control cell (top histogram). FITC-conjugated goat-anti-rabbit secondary antibodies were used for the analysis.

Submit a product review to [Biocompare.com](https://www.biocompare.com)

Submit a review of this product to [Biocompare.com](https://www.biocompare.com) to receive a \$20 Amazon.com giftcard! Your reviews help your fellow scientists make the right decisions. Thank you for your contribution.



Anti-EBP1 Antibody (C-term)

For Research Use Only. Not for use in diagnostic procedures.