

## Anti-EphB1/2 Antibody

Catalog Number: A02811-2

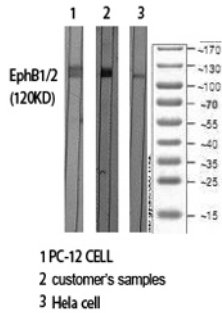
### Overview

Product Name	Anti-EphB1/2 Antibody
Reactive Species	Human, Mouse, Rat
Description	Boster Bio Anti-EphB1/2 Antibody catalog # A02811-2. Tested in ELISA, IF, IHC, WB applications. This antibody reacts with Human, Mouse, Rat.
Application	ELISA, IF, IHC, WB
Clonality	Polyclonal
Formulation	Liquid in PBS containing 50% glycerol, 0.5% stabilizing protein and 0.02% sodium azide. *This antibody is supplied in a stabilized formulation. Compatibility with conjugation reactions depends on the chemistry of the conjugation method used. For conjugation methods that are not compatible with the stabilizing components present in this formulation, a carrier-free antibody format is required.
Storage Instructions	Store at -20°C for one year. For short term storage and frequent use, store at 4°C for up to one month. Avoid repeated freeze-thaw cycles.
Host	Rabbit
Uniprot ID	P54762

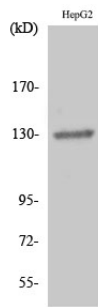
### Technical Details

Immunogen	The antiserum was produced against synthesized peptide derived from human EPHB1/2. AA range:561-610
Isotype	IgG
Form	Liquid
Concentration	1 mg/ml
Purification	The antibody was affinity-purified from rabbit antiserum by affinity-chromatography using epitope-specific immunogen.
Suggested Dilutions	WB 1:500-1:2000 IHC 1:100-1:300 IF 1:200-1:1000 ELISA 1:40000

## Anti-EphB1/2 Antibody (A02811-2) Images



Western blotting validation for Anti-EphB1/2 Antibody A02811-2 Western Blot (WB) analysis of specific cells using EphB1/2 polyclonal antibody. Electrophoresis was performed on a SDS-PAGE gel. To determine SDS-PAGE gel concentration



Western blotting validation for Anti-EphB1/2 Antibody A02811-2 Western Blot (WB) analysis of HepG2 cells using EphB1/2 polyclonal antibody. Electrophoresis was performed on a SDS-PAGE gel. To determine SDS-PAGE gel concentration

## Submit a product review to Biocompare.com

Submit a review of this product to Biocompare.com to receive a \$20 Amazon.com giftcard! Your reviews help your fellow scientists make the right decisions. Thank you for your contribution.



Anti-EphB1/2 Antibody

For Research Use Only. Not for use in diagnostic procedures.