

Anti-Phospho-EphB1/2 (Y594/604) Antibody

Catalog Number: A02811Y594-1

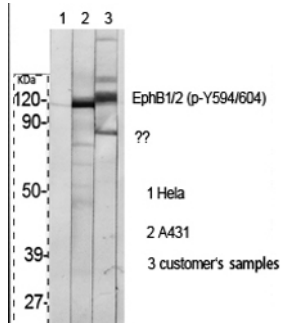
Overview

Product Name	Anti-Phospho-EphB1/2 (Y594/604) Antibody
Reactive Species	Human, Mouse, Rat
Description	Boster Bio Anti-Phospho-EphB1/2 (Y594/604) Antibody catalog # A02811Y594-1. Tested in WB, IF, ELISA applications. This antibody reacts with Human, Mouse, Rat.
Application	ELISA, IF, WB
Clonality	Polyclonal
Formulation	Liquid in PBS containing 50% glycerol, 0.5% stabilizing protein and 0.02% sodium azide. *This antibody is supplied in a stabilized formulation. Compatibility with conjugation reactions depends on the chemistry of the conjugation method used. For conjugation methods that are not compatible with the stabilizing components present in this formulation, a carrier-free antibody format is required.
Storage Instructions	Store at -20°C for one year. For short term storage and frequent use, store at 4°C for up to one month. Avoid repeated freeze-thaw cycles.
Host	Rabbit
Uniprot ID	P54762

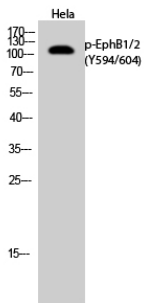
Technical Details

Immunogen	The antiserum was produced against synthesized peptide derived from human EPHB1/2 around the phosphorylation site of Tyr594/604. AA range:561-610
Isotype	IgG
Form	Liquid
Concentration	1 mg/ml
Purification	The antibody was affinity-purified from rabbit antiserum by affinity-chromatography using epitope-specific immunogen.
Suggested Dilutions	WB 1:500-1:2000 IF 1:200-1:1000 ELISA 1:5000

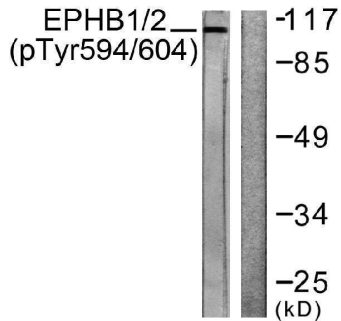
Anti-Phospho-EphB1/2 (Y594/604) Antibody (A02811Y594-1) Images



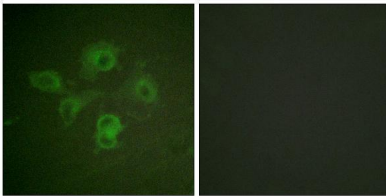
Western Blot analysis of various cells using Phospho-EphB1/2 (Y594/604) Polyclonal Antibody



Western Blot analysis of HeLa cells using Phospho-EphB1/2 (Y594/604) Polyclonal Antibody



Western blot analysis of lysates from HepG2 cells, using EPHB1/2 (Phospho-Tyr594/604) Antibody. The lane on the right is blocked with the phospho peptide.



Immunofluorescence analysis of HUVEC cells, using EPHB1/2 (Phospho-Tyr594/604) Antibody. The picture on the right is blocked with the phospho peptide.

Submit a product review to Biocompare.com

Submit a review of this product to Biocompare.com to receive a \$20 Amazon.com giftcard! Your reviews help your fellow scientists make the right decisions. Thank you for your contribution.



Anti-Phospho-EphB1/2 (Y594/604) Antibody

For Research Use Only. Not for use in diagnostic procedures.