

Anti-SMURF1 Antibody

Catalog Number: A02823

About SMURF1

SMURF1 (SMAD ubiquitin regulatory factor 1) is a negative regulator of TGF-beta signaling (1). SMURF1 and SMURF2 are members of HECT domain E3 ubiquitin ligase which are involved in the enzymatic reactions of the Ub conjugating pathway (1,2). SMURF1 negatively regulates osteoblast activity and response to bone morphogenesis protein (BMP) through controlling MEKK2 degradation (3). SMURF1 has recently been shown to play a role in breast cancer cell migration and invasion through the downregulation of RhoA (4).

Overview

| | |
|----------------------|---|
| Product Name | Anti-SMURF1 Antibody |
| Reactive Species | Human, Mouse, Rat |
| Description | Boster Bio Anti-SMURF1 Antibody (Catalog # A02823). Tested in ELISA, WB, IHC-P applications. This antibody reacts with Human, Mouse, Rat. |
| Application | ELISA, IHC-P, WB |
| Clonality | Polyclonal |
| Formulation | SMURF1 antibody is supplied in PBS containing 0.02% sodium azide. |
| Storage Instructions | SMURF1 antibody can be stored at 4°C for three months and -20°C, stable for up to one year. |
| Host | Rabbit |
| Uniprot ID | Q9HCE7 |

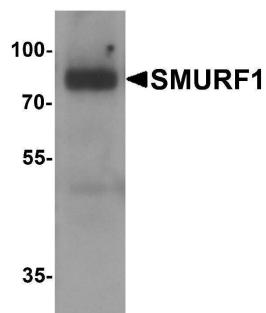
Technical Details

| | |
|----------------------------|---|
| Immunogen | SMURF1 antibody was raised against a 16 amino acid peptide near the amino terminus of human SMURF1. The immunogen is located within amino acids 180 - 230 of SMURF1. |
| Predicted Reactive Species | Pig |
| Cross Reactivity | SMURF1 antibody is human, mouse and rat reactive. At least three isoforms of SMURF1 are known to exist this antibody will recognize all three isoforms. SMURF1 is predicted to not cross-react with SMURF2. |
| Isotype | IgG |
| Form | Liquid |
| Concentration | 1 mg/mL |
| Purification | SMURF1 antibody is affinity chromatography purified via peptide column. |

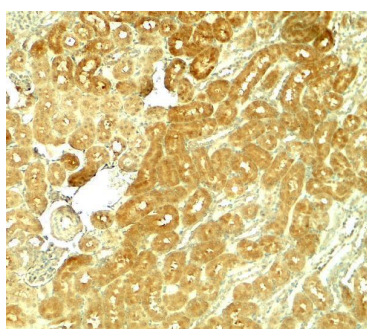
Suggested Dilutions

SMURF1 body can be used for detection of SMURF1 by Western blot at 1 - 2 ug/ml. Antibody can also be used for Immunohistochemistry starting at 5 ug/mL.
Antibody validated: Western Blot in human samples and Immunohistochemistry in rat samples. All other applications and species not yet tested. Optimal dilutions for each application should be determined by the researcher.

Anti-SMURF1 Antibody (A02823) Images



Western blot analysis of SMURF1 in 293 cell lysate with SMURF1 antibody at 1 ug/ml.



Immunohistochemistry of SMURF1 in rat kidney tissue with SMURF1 antibody at 5 ug/ml.

Submit a product review to Biocompare.com

Submit a review of this product to Biocompare.com to receive a \$20 Amazon.com giftcard! Your reviews help your fellow scientists make the right decisions. Thank you for your contribution.



Anti-SMURF1 Antibody

For Research Use Only. Not for use in diagnostic procedures.